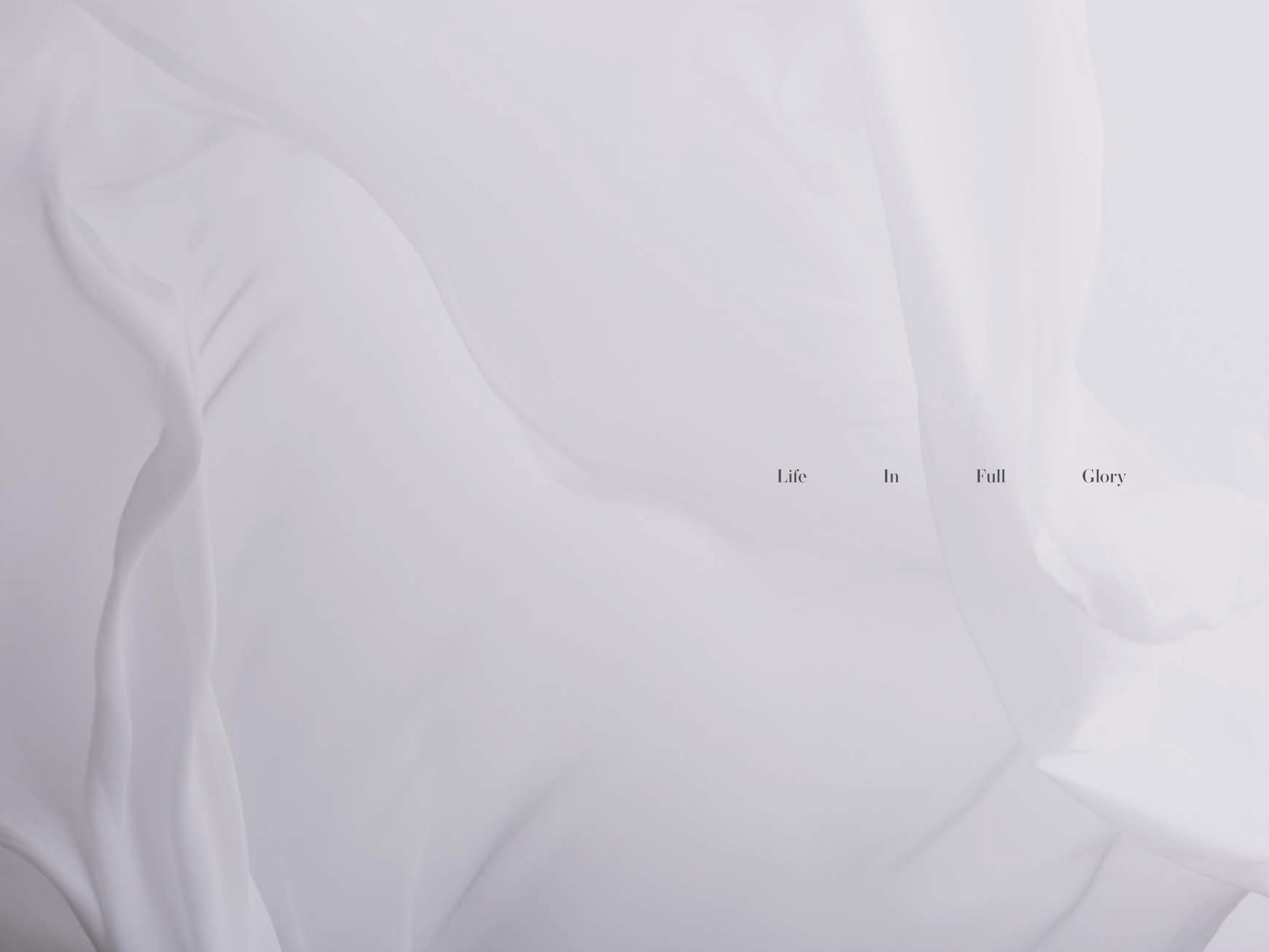


MARINA BAY

REEF ISLAND





Life In Full Glory





A Floating Lifestyle

Evoking Timeless Sentiments of Calm.

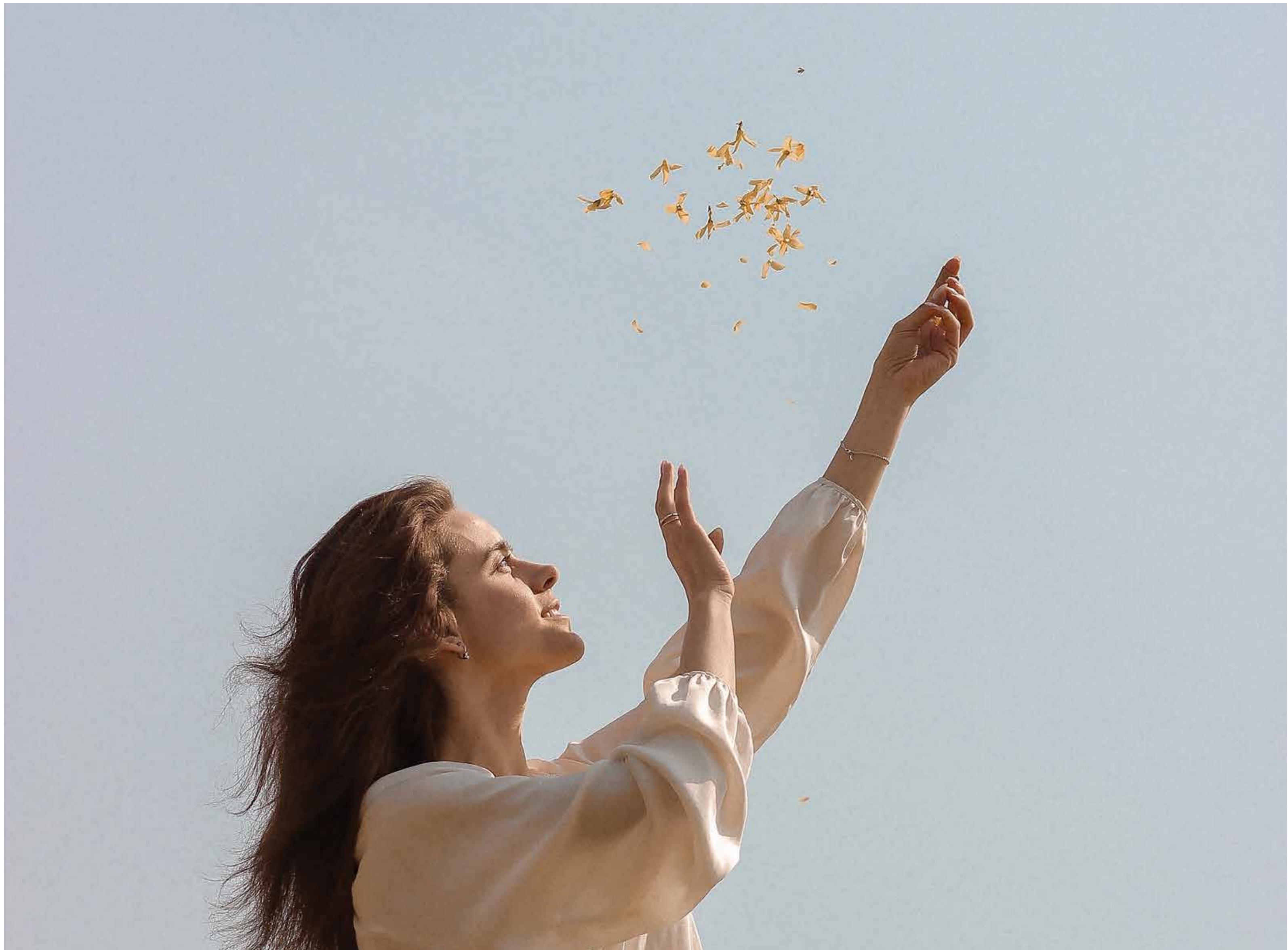
Marina Bay introduces a new era of floating luxury on 34,000 sqm where mesmerizing sea views stretch out as far as your imagination. Immaculately designed as a tight-knit island community in the heart of Bahrain, the iconic destination is a one-of-a-kind invitation to disconnect from the stresses of city life while reconnecting with pristine nature from the comfort of your own living room.

The elemental edge of Marina Bay lies in its breakthrough elevation technique that not only transforms every home into an open amphitheatre of sky and sea, but also breaks down the optimum in island tranquillity for your ultimate regeneration. Sleek, serene and highly sophisticated, Marina Bay is a waterfront reality where every villa dreams in all shades of blue to immerse you in

a floating lifestyle, born in water, basked in beauty and alive with select world-class amenities, enriching your very own island paradise.



Disclaimer 1. Drawings are not to scale. 2. The architectural details, dimensions and area in this plan are based on Schematic Design information only, and final As Built conditions may vary. 3. All units are sold as unfurnished apartments, without furniture and furnishings, without white goods provisions, etc. 4. All images used are for illustrative purposes only and do not represent the actual size, features, specifications, fittings, and furnishings. 5. Marina Bay reserves the right to make revisions/alterations, at its absolute discretion, and without liability.



Location & Proximity

Marina Bay is smartly designed with residents' privacy and utmost convenience in mind. Therefore, the destination enjoys an ideal location in Reef Island which is nestled between Bahrain's City Centre, Seef District and the thriving financial harbour for those wishing to execute business next-door.

Interconnected to lively happenings from every direction, Marina Bay is directly linked to Bahrain's main highway network, allowing homeowners to reach anywhere they wish in record time.

Situated 15 minutes away from Bahrain International Airport, Marina Bay sets itself as a main intersection, that offers worlds of floating serenity to investors from around the world.

Getting there

5 minute drive to Bahrain Financial Harbour

5 minute drive to Bahrain City Centre and Seef District

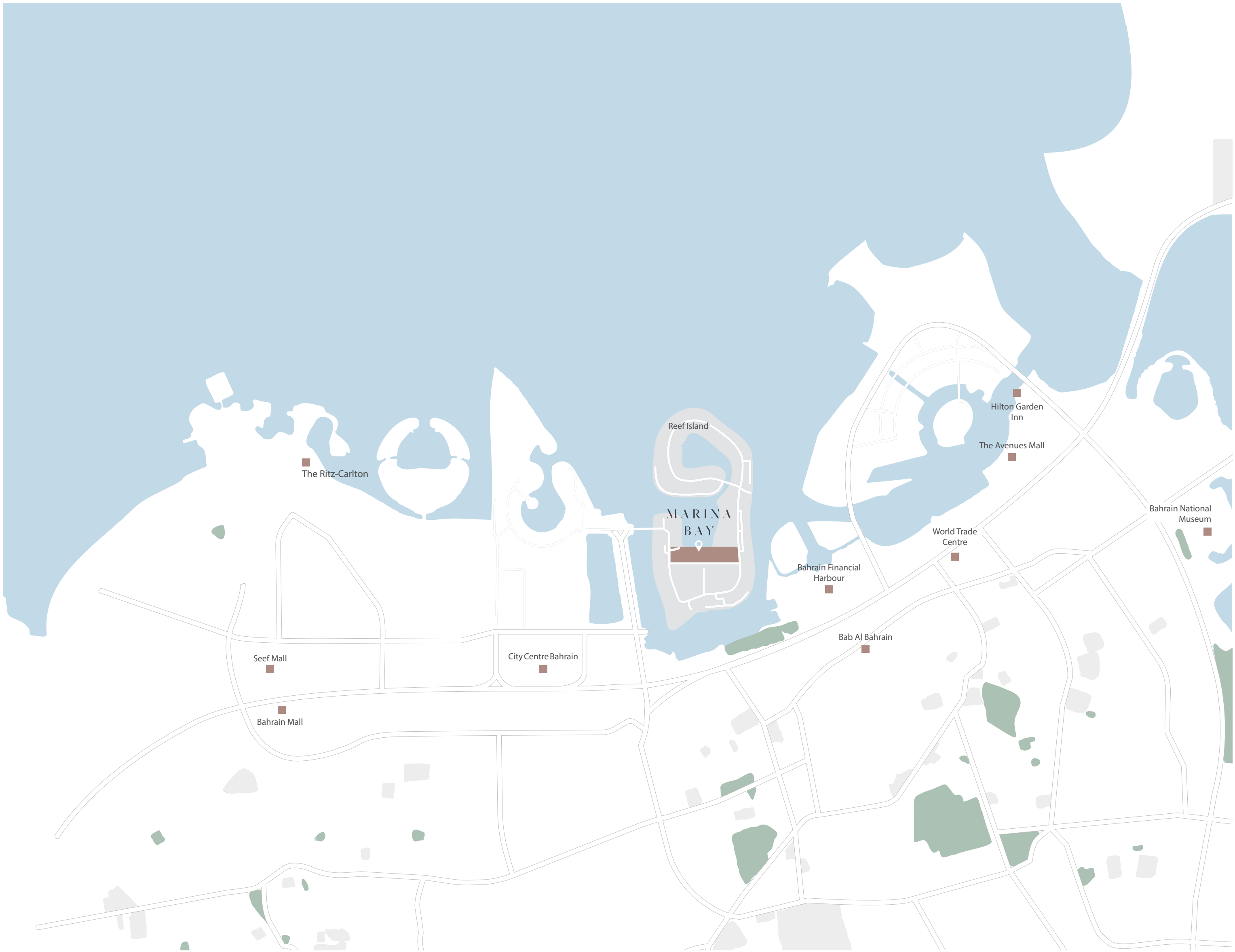
15 minute drive to Bahrain International Airport

20 minute drive to Saudi Causeway

30 minute drive to Bahrain International Circuit



A unique living experience
of uninterrupted solace
close to everywhere.







Artfully designed

around you



Designed by internationally acclaimed TAEP, Marina Bay adopts an open plan philosophy that re-defines the harmonious existence of people, nature and refined architecture on one breathtaking island.

The smart masterplan is carefully elevated around the vastness of the open sea, lending every villa type unobstructed views on an open horizon, as well as prolonged hours of sunlight and fresh breeze circulation for ultimate wellbeing.

By melding the best in sleek modern architecture and floating beauty, homes at Marina Bay are gracefully perched over the water to crown a front-row seat on timeless beauty, perfected by lush landscaping and pedestrian friendly paths winding along the project for daily recreation. Boasting a bustling marina that is a perfect launch pad for endless water adventures, Marina Bay is in short, the place to unwind on shimmering pools coming one with the open sea, sail away to make new discoveries or simply watch breathtaking sunsets, thanks to an ideal orientation that invites you to live a life of peaceful connection to nature.

and open views.

Elevating new standards

of intricate luxury

in absolute harmony

with the open sea.





An Architectural Marvel Blending Nature & Contemporary Elegance

At Marina Bay, it's hard to tell whether homes are a natural extension of the expansive sea or vice versa. Every elegantly-appointed villa offers a serene escape that seamlessly blends indoor and outdoor spaces, allowing for nature to bloom inside your personal space. Boasting a sleek and streamlined facade, each villa is smartly designed to maximize stunning sea views and natural daylight with floor-to-ceiling windows and expansive rooftop terraces that bring the outdoors in.

Dressed in a washed out pearl white colour, neutral stone and chic marble punctuations, your villa stands as a true testament to sustainable design, thanks to durable materials that resist the salty sea air while beautifully contrasting with the site's mesmerizing surroundings.





Landscaping & Boardwalks

A Breathing Lifestyle to Grow Forever Young.

Stepping into Marina Bay is like journeying through a private oasis of clam, lined with towering trees, native plantations and manicured gardens that directly open onto the tranquil blue sea. The signature island teleports residents to an evergreen dimension, thanks to a smart landscaping scheme that encourages seamless walkability through verdant boardwalks and safe pedestrian paths set against a magical backdrop.

Admired for being not only beautiful but also functional, the project's landscaping offers quiet shaded areas for homeowners to reflect and generous gardens luring the community to socialize in a sustainable ambience, second to none.





Where Film & Fantasy
Meet on an Island.

Marina Bay Cinema

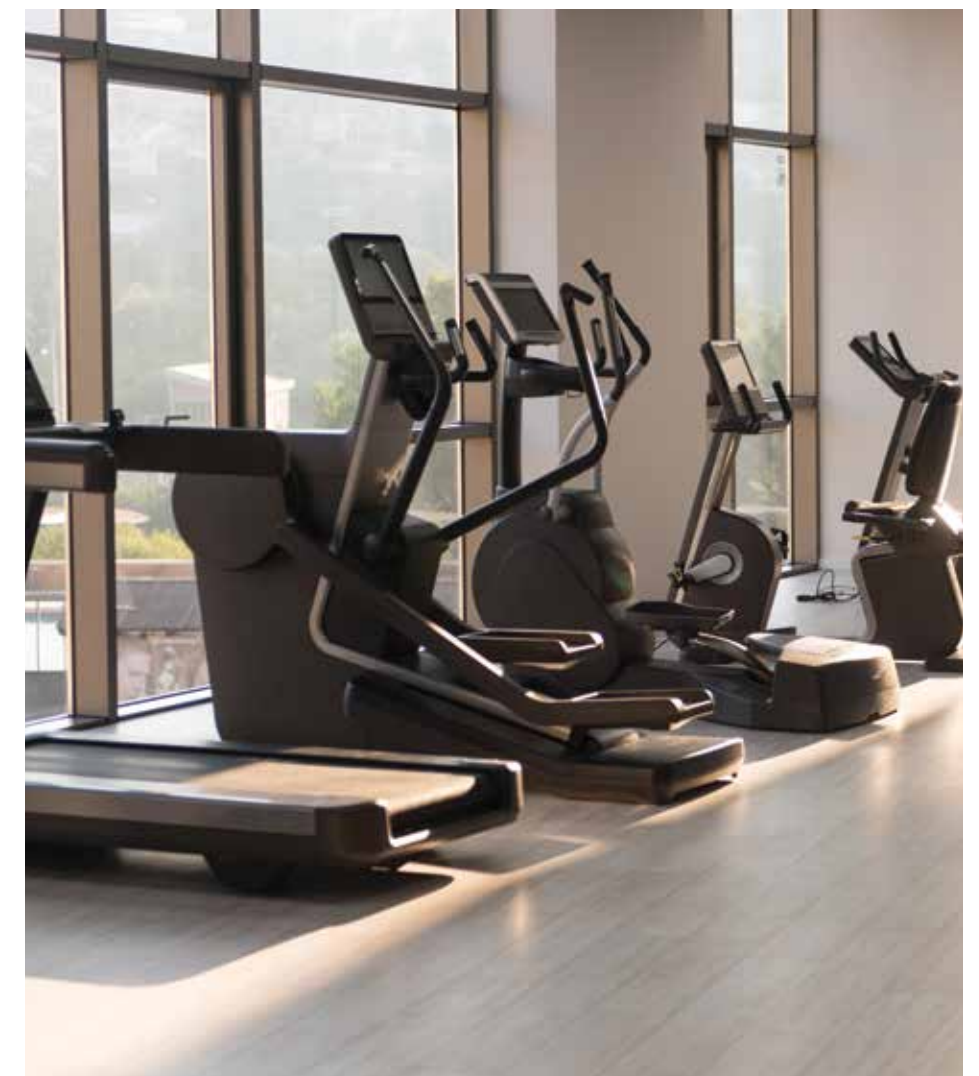
Imagine enjoying a quiet movie night with friends or family on one big cinema screen.

The cinema is more than just a place to watch movies, it's an exciting community spot, inviting everyone to connect over their love for nature and film.

Stay Fit in
Floating Surroundings

Marina Bay Gym

Every aspect of Marina Bay is carefully planned to promote a healthier lifestyle. The iconic island offers a state-of-the-art gym, inviting professional athletes and everyone wishing to remain fit to experience true wellness in inspirational settings.



Shimmering Pools

Touching the



Open Sea

Marina Bay Swimming Pools

Whether you wish to spend the day lounging under the sun with a refreshing cocktail in hand or simply want to swim and refresh, as you take in open vistas of the deep blue sea, Marina Bay offers all that and much more.

Designed to maximize water-front beauty in every direction, Marina Bay invites you to dive deep and surface all new before captivating sea views.



A SLICE OF
ISLAND PARADISE
TO CALL HOME.



THE SIGNATURES
SERENEVILLAS





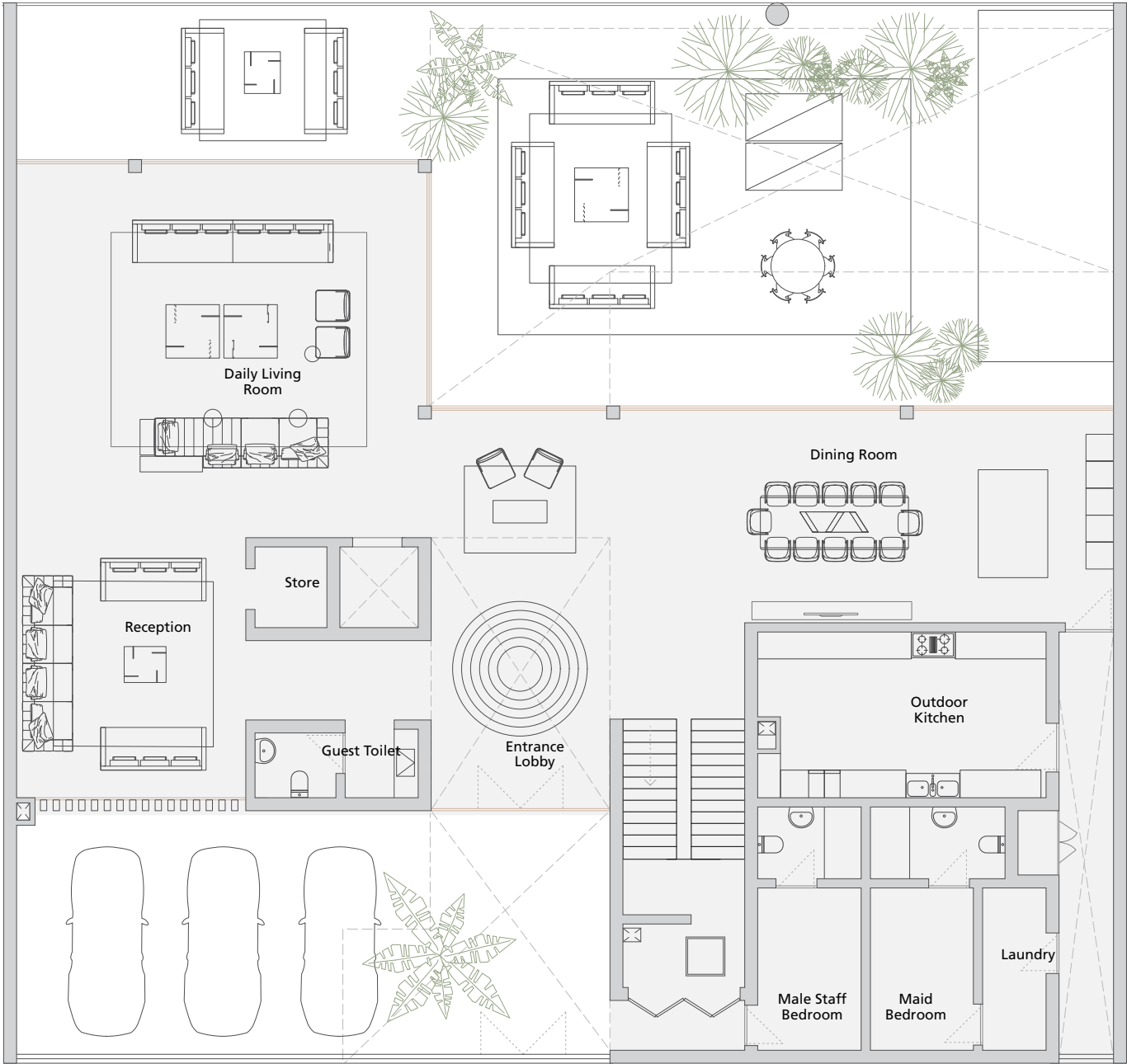


Plot 590 sqm

Total BUA 1,076 sqm

2 Storeys

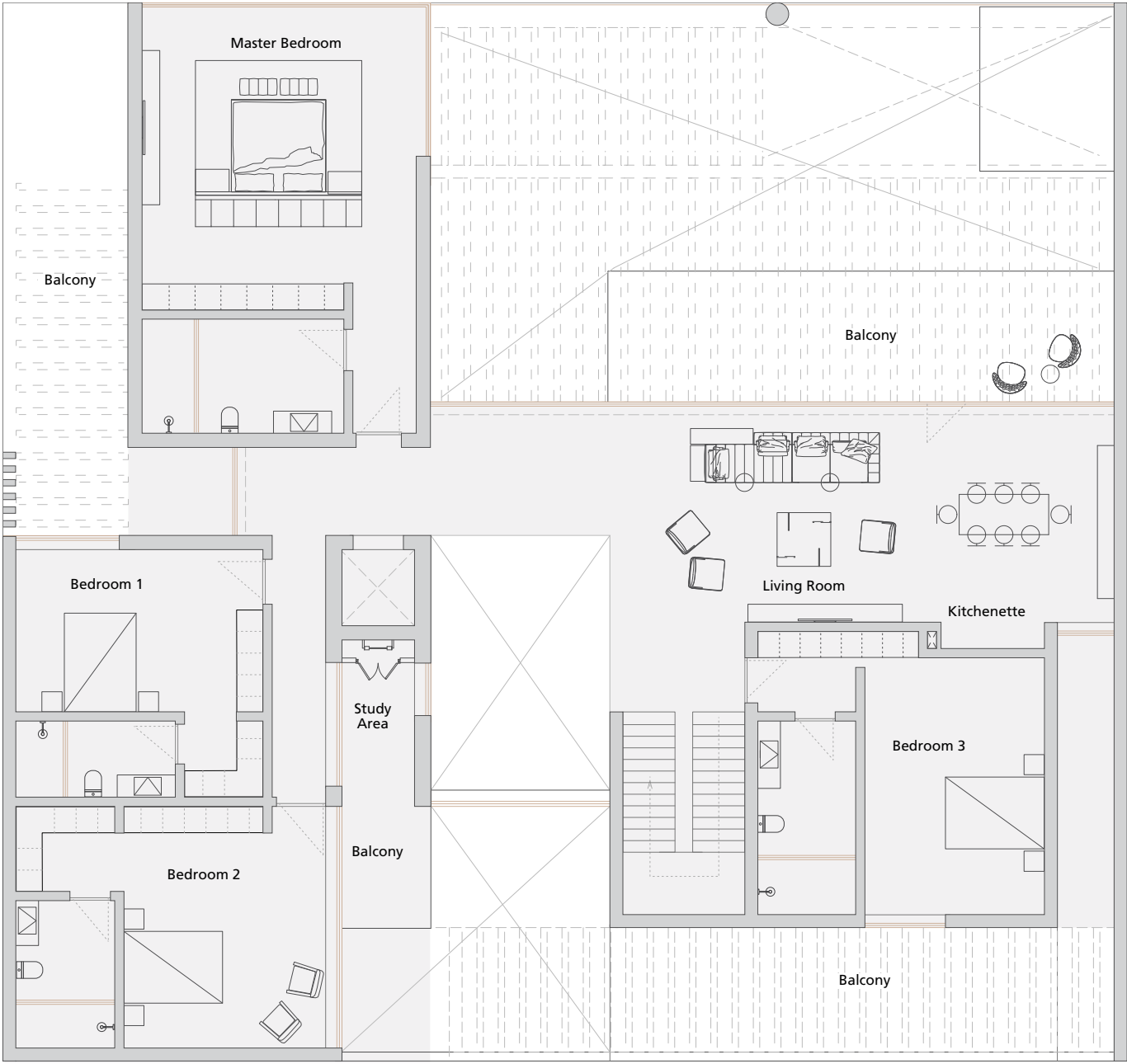
GROUND FLOOR



- ENTRANCE LOBBY
23 sqm
- GUEST TOILET
5 sqm
- RECEPTION
37 sqm
- STORE
3 sqm
- DAILY LIVING ROOM
73 sqm
- DINING ROOM
67 sqm
- OUTDOOR KITCHEN
23 sqm
- LAUNDRY
5 sqm
- MAID BEDROOM
13 sqm
- MALE STAFF BEDROOM
10 sqm

A1

FIRST FLOOR



- MASTER BEDROOM
54 sqm
- BEDROOM 1
29 sqm
- BEDROOM 2
36 sqm
- BEDROOM 3
37 sqm
- STUDY AREA
5 sqm
- LIVING ROOM
106 sqm

A1

Disclaimer 1.Drawings are not to scale. 2.The architectural details, dimensions and area in this plan are based on Schematic Design information only, and final As-Built conditions may vary. 3.All units are sold as unfurnished apartments, without furniture and furnishings, without white goods provisions, etc. 4.All images used are for illustrative purposes only and do not represent the actual size, features, specifications, fittings, and furnishings. 5.Marina Bay reserves the right to make revisions/alterations, at its absolute discretion, and without liability.





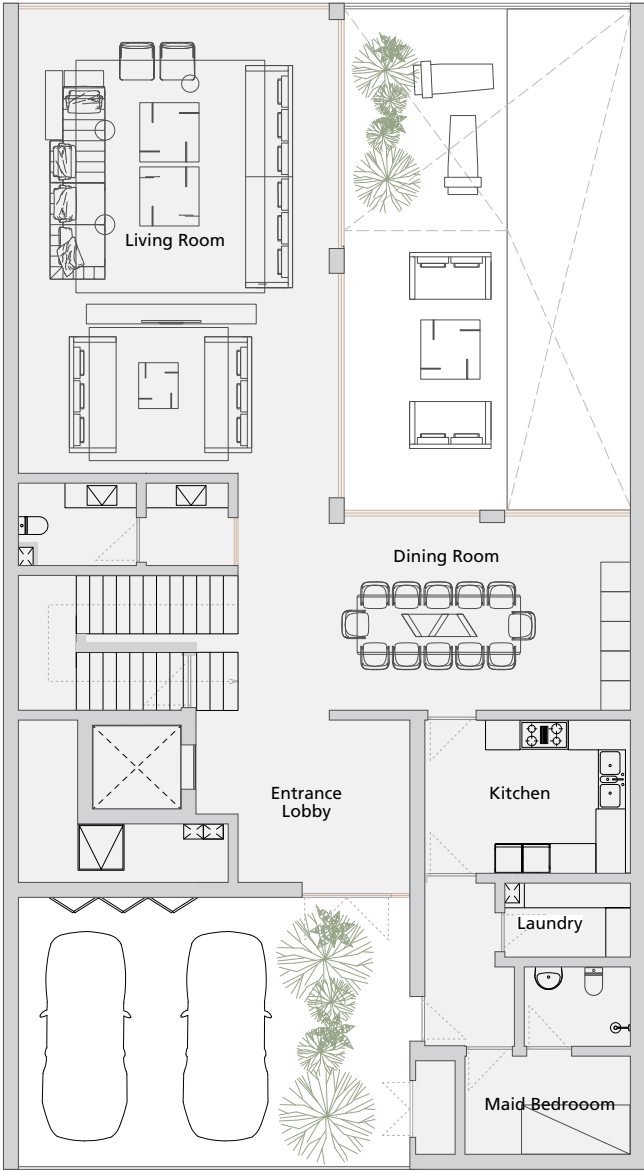


Plot 307sqm

Total BUA 569 sqm

2 Storeys

GROUND FLOOR



ENTRANCE LOBBY
23 sqm

KITCHEN
13 sqm

LAUNDRY
4 sqm

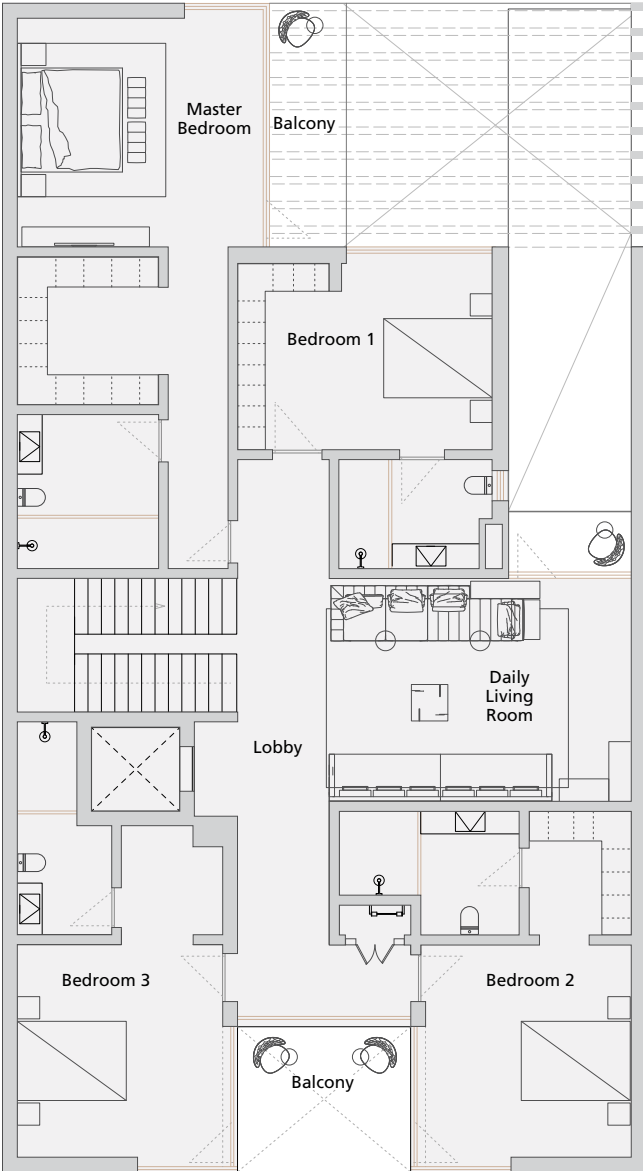
MAID BEDROOM
10 sqm

DINING ROOM
23 sqm

LIVING ROOM
59 sqm

GUEST TOILET
7 sqm

FIRST FLOOR



LOBBY
24 sqm

MASTER BEDROOM
48 SQM

BEDROOM 1
25 sqm

BEDROOM 2
26 sqm

BEDROOM 3
25 sqm

DAILY LIVING ROOM
28 sqm

A3

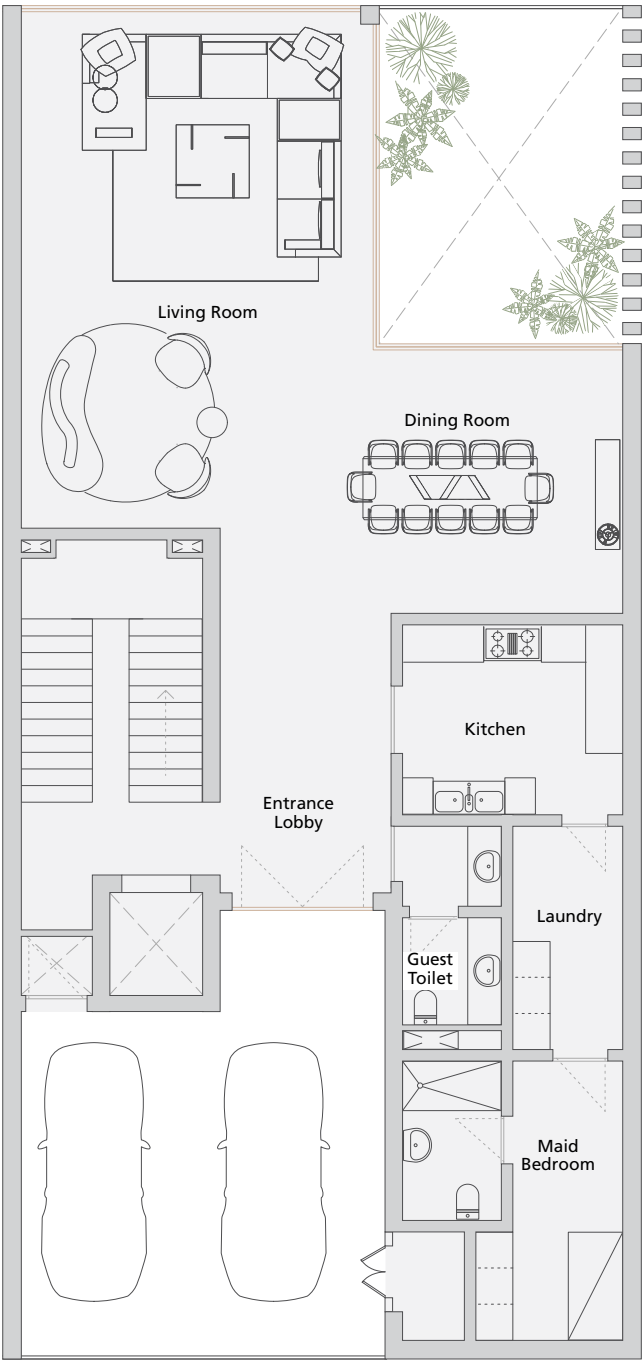






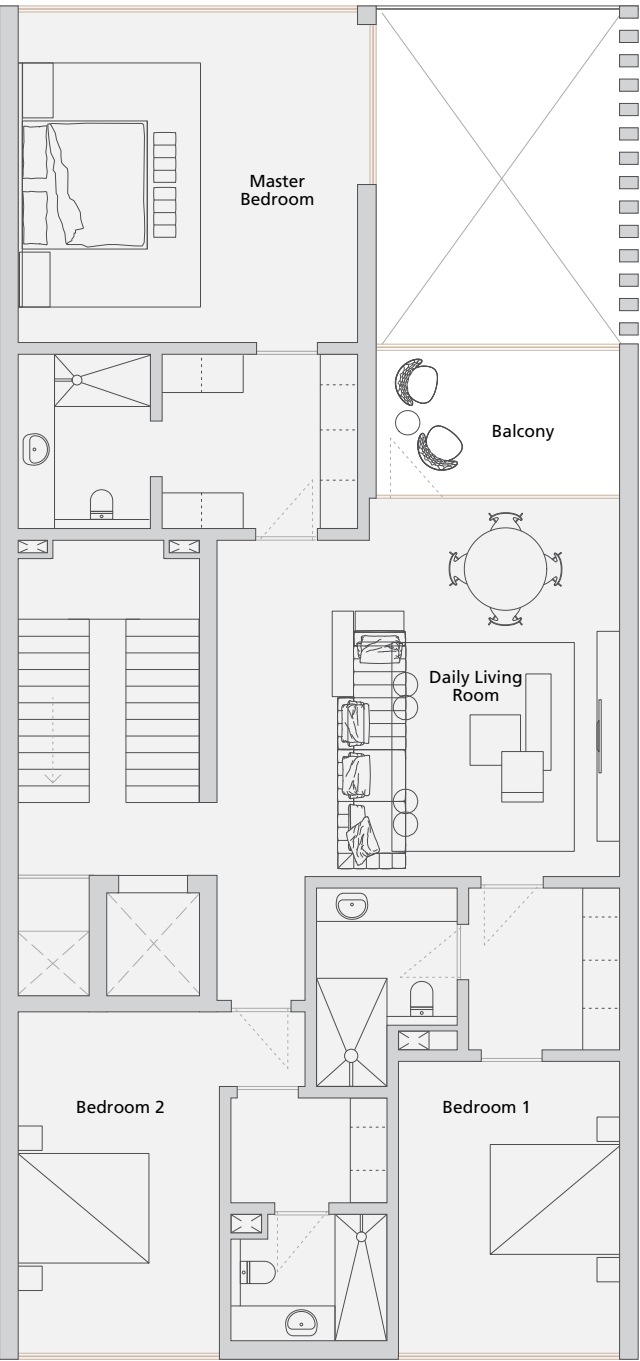


GROUND FLOOR



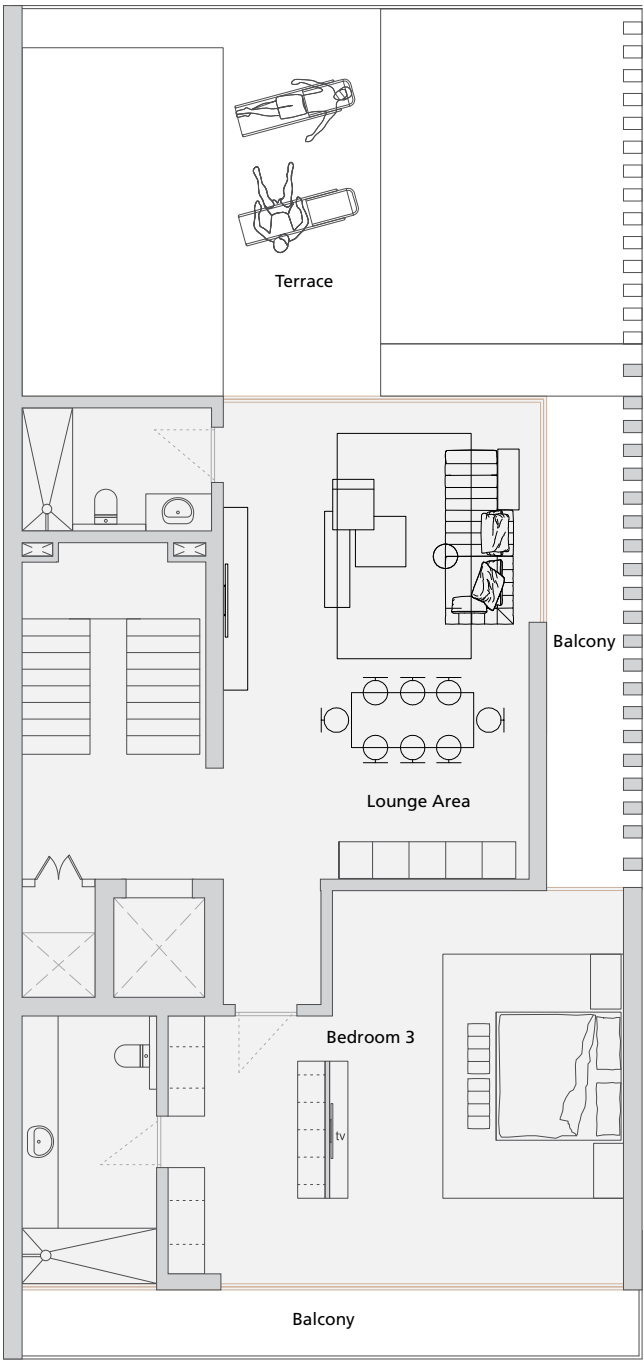
- ENTRANCE LOBBY
13sqm
- KITCHEN
11sqm
- LAUNDRY
7sqm
- MAID BEDROOM
13sqm
- DINING ROOM
23sqm
- LIVING ROOM
44sqm
- GUEST TOILET
5sqm

FIRST FLOOR



- MASTER BEDROOM
45sqm
- BEDROOM 1
30sqm
- BEDROOM 2
29sqm
- DAILY LIVING ROOM
42sqm

SECOND FLOOR



- BEDROOM 3
50sqm
- LOUNGE AREA
43sqm

B3

B3

Disclaimer 1.Drawings are not to scale. 2.The architectural details, dimensions and area in this plan are based on Schematic Design information only, and final As-Built conditions may vary. 3.All units are sold as unfurnished apartments, without furniture and furnishings, without white goods provisions, etc. 4.All images used are for illustrative purposes only and do not represent the actual size, features, specifications, fittings, and furnishings. 5.Marina Bay reserves the right to make revisions/alterations, at its absolute discretion, and without liability.



APARTMENT TYPE C1 / C2

Disclaimer 1.Drawings are not to scale. 2.The architectural details, dimensions and area in this plan are based on Schematic Design information only, and final As-Built conditions may vary. 3.All units are sold as unfurnished apartments, without furniture and furnishings, without white goods provisions, etc. 4.All images used are for illustrative purposes only and do not represent the actual size, features, specifications, fittings, and furnishings. 5.Marina Bay reserves the right to make revisions/alterations, at its absolute discretion, and without liability.



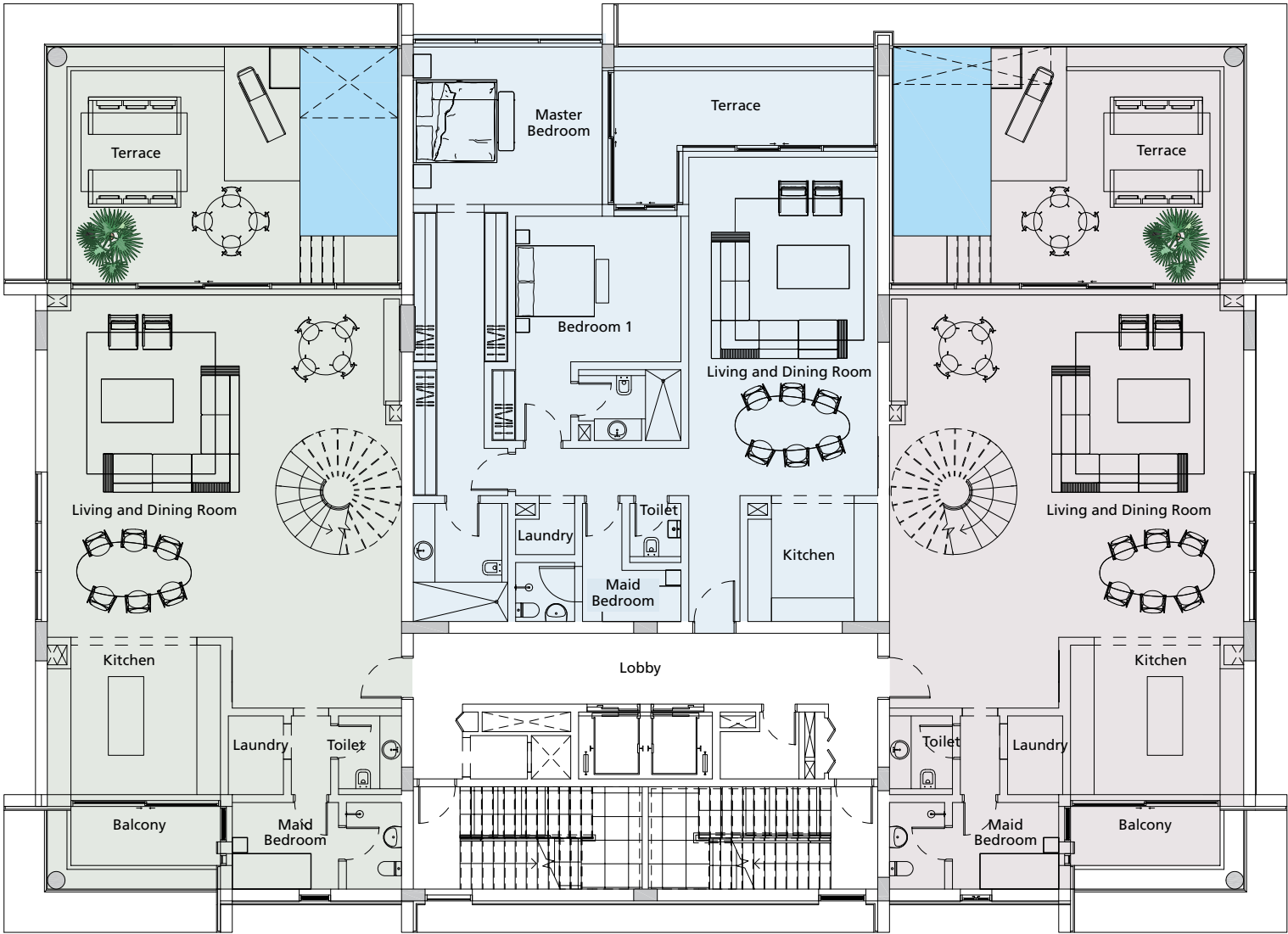
FIRST FLOOR

5 Storeys

TYPE ONE
DUPLEX

TYPE TWO
APARTMENT

TYPE THREE
DUPLEX



TOTAL AREA
402 sqm

TOTAL AREA
188 sqm

TOTAL AREA
404 sqm

C1

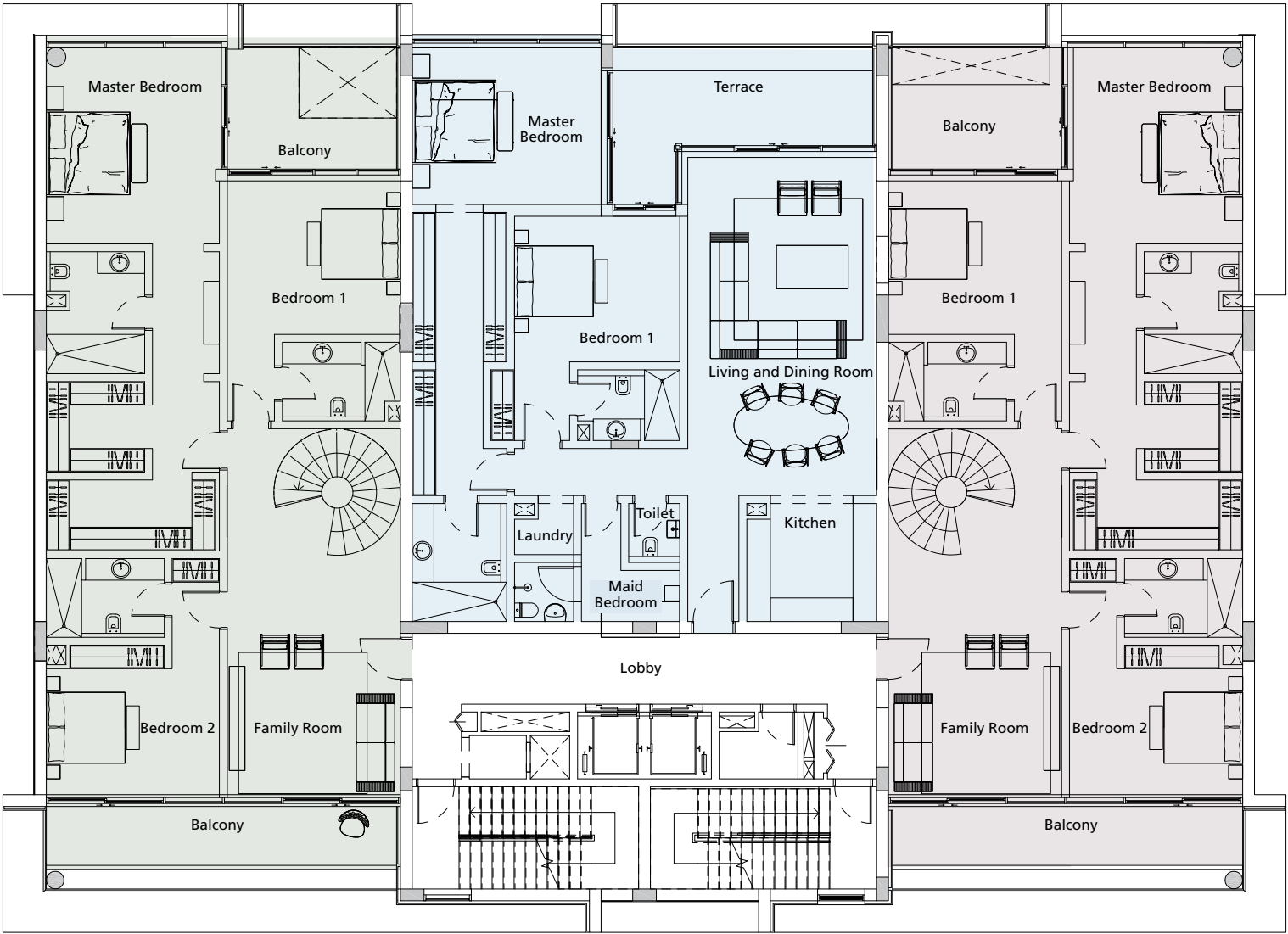
SECOND FLOOR

5 Storeys

TYPE ONE
DUPLEX

TYPE FOUR
APARTMENT

TYPE THREE
DUPLEX



TOTAL AREA
402 sqm

TOTAL AREA
188 sqm

TOTAL AREA
404 sqm

C1

Disclaimer: 1. Drawings are not to scale. 2. The architectural details, dimensions and area in this plan are based on Schematic Design information only, and final As-Built conditions may vary. 3. All units are sold as unfurnished apartments, without furniture and furnishings, without white goods provisions, etc. 4. All images used are for illustrative purposes only and do not represent the actual size, features, specifications, fittings, and furnishings. 5. Marina Bay reserves the right to make revisions/alterations, at its absolute discretion, and without liability.

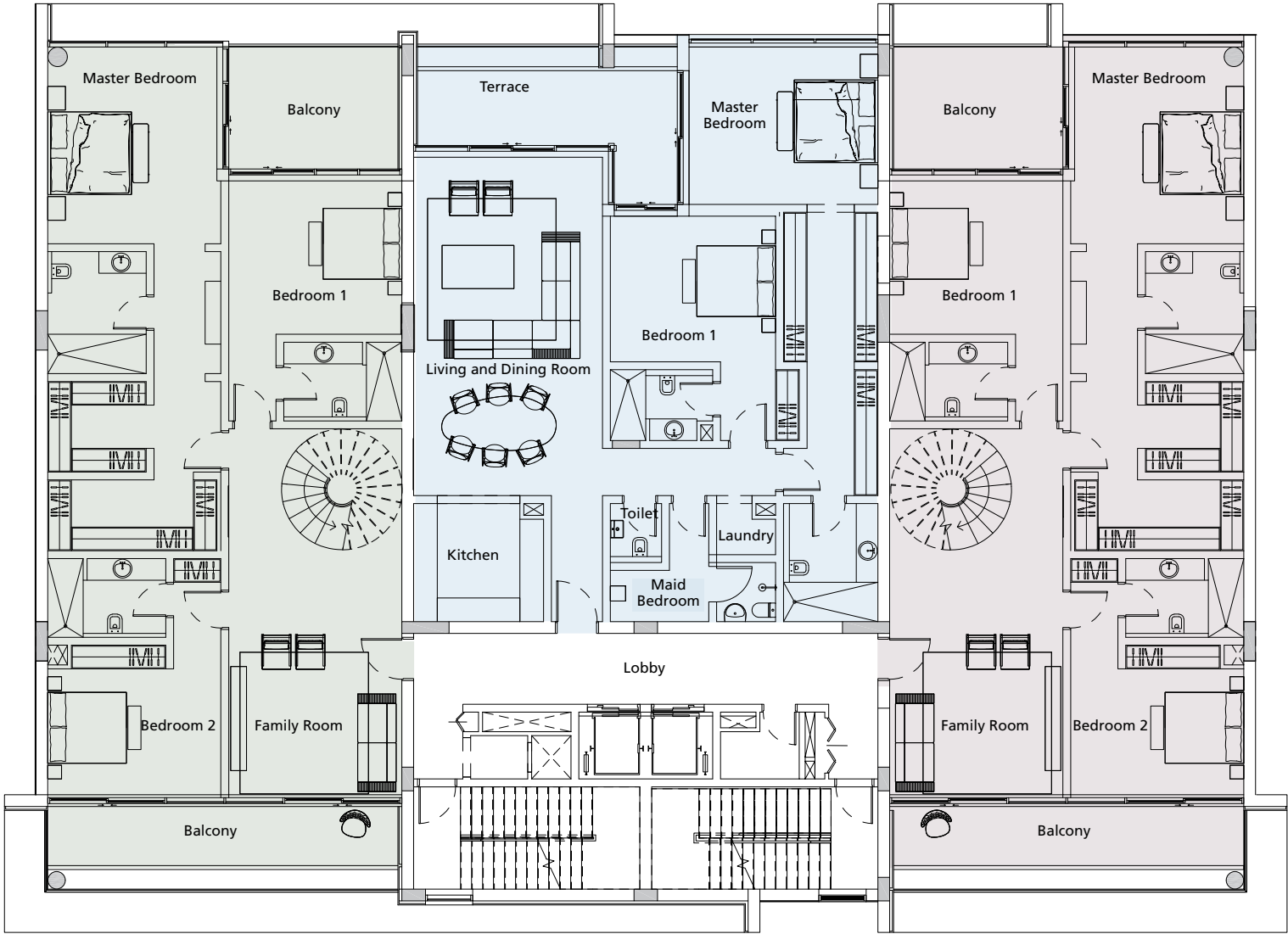
THIRD FLOOR

5 Storeys

TYPE FIVE
DUPLEX

TYPE SIX
APARTMENT

TYPE SEVEN
DUPLEX



TOTAL AREA
409 sqm

TOTAL AREA
188 sqm

TOTAL AREA
410 sqm

C1

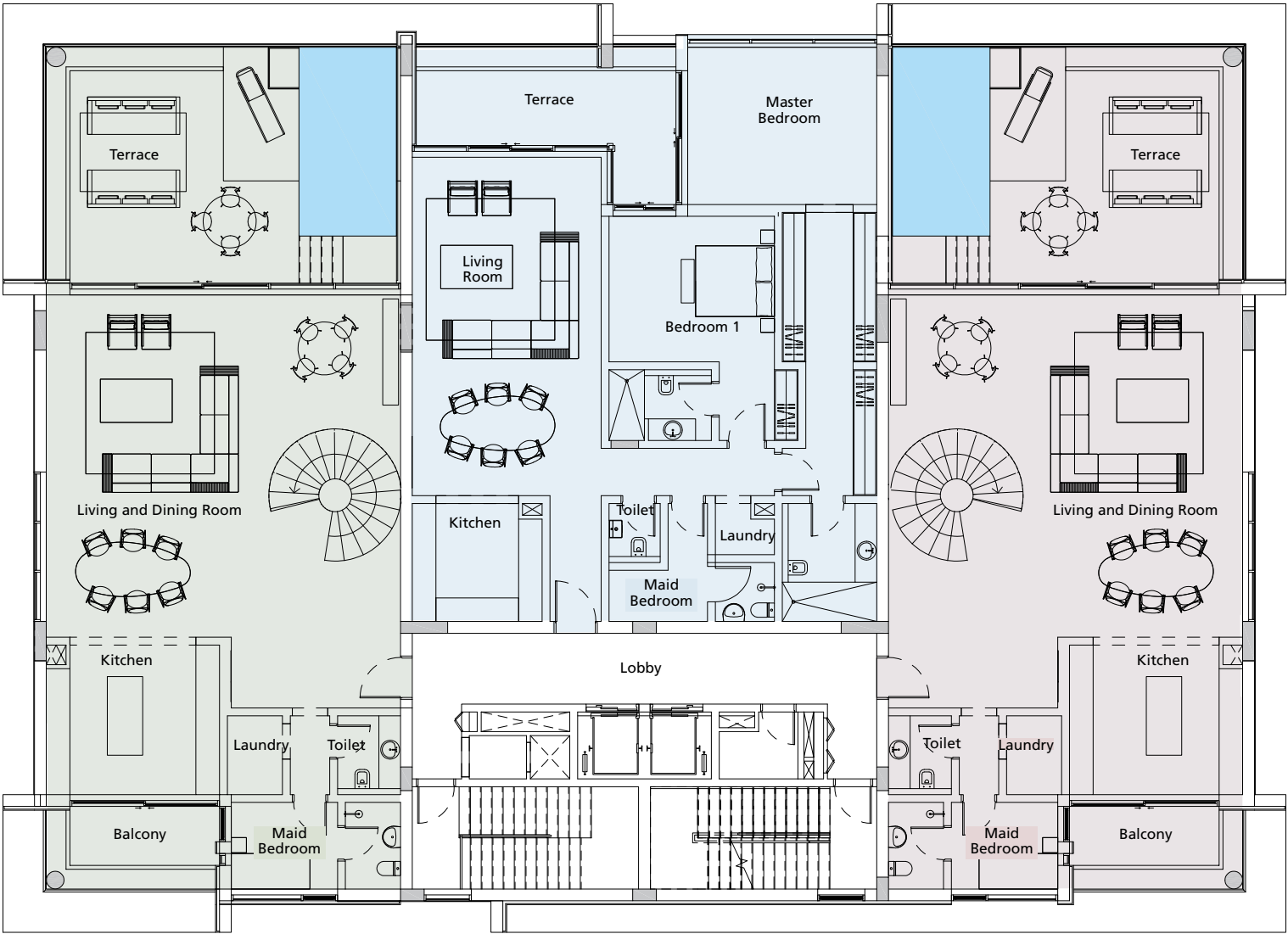
FOURTH FLOOR

5 Storeys

TYPE FIVE
DUPLEX

TYPE EIGHT
APARTMENT

TYPE SEVEN
DUPLEX



TOTAL AREA
409 sqm

TOTAL AREA
188 sqm

TOTAL AREA
410 sqm

C1

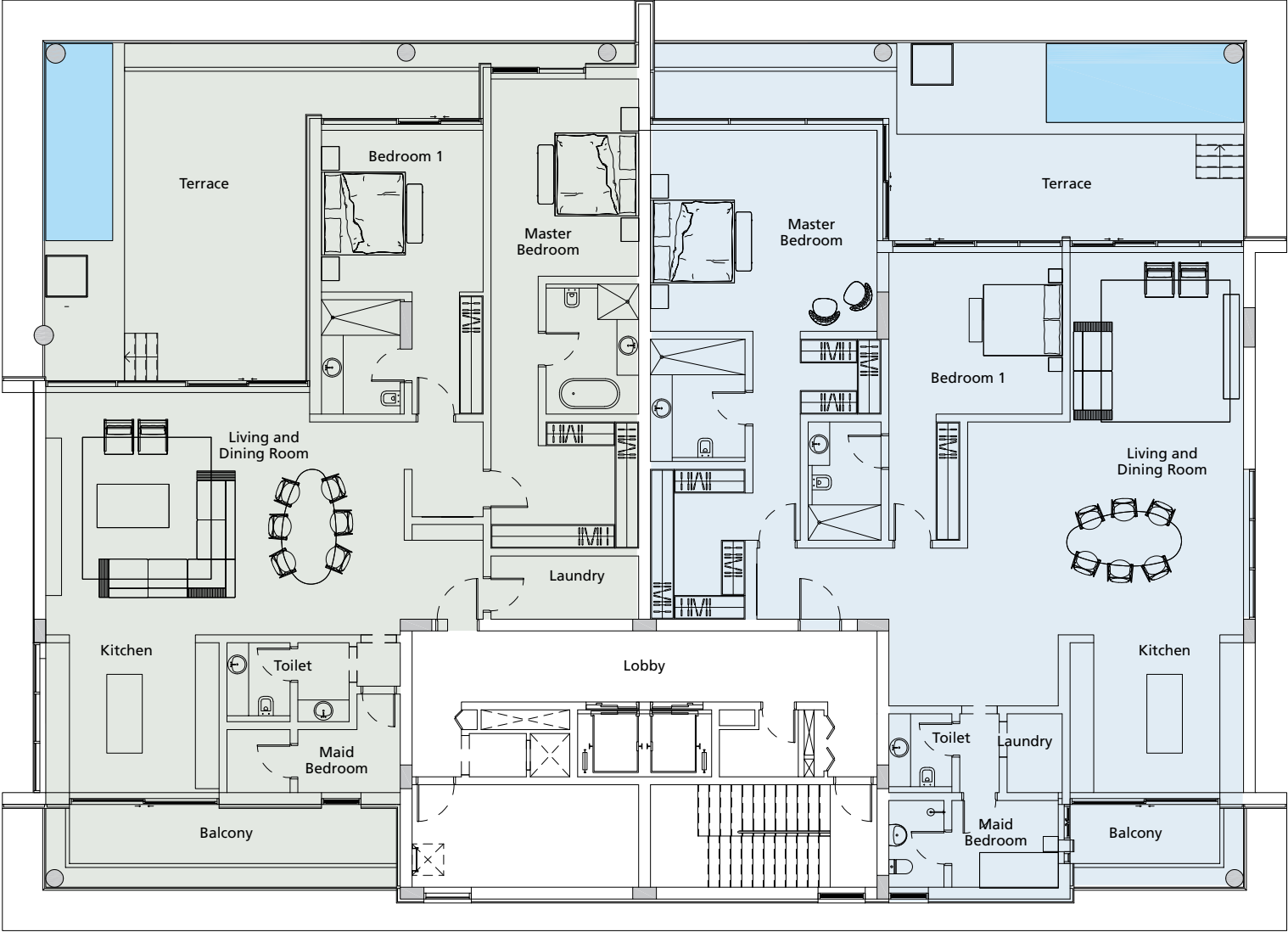
Disclaimer: 1. Drawings are not to scale. 2. The architectural details, dimensions and area in this plan are based on Schematic Design information only, and final As-Built conditions may vary. 3. All units are sold as unfurnished apartments, without furniture and furnishings, without white goods provisions, etc. 4. All images used are for illustrative purposes only and do not represent the actual size, features, specifications, fittings, and furnishings. 5. Marina Bay reserves the right to make revisions/alterations, at its absolute discretion, and without liability.

FIFTH FLOOR

5 Storeys

TYPE NINE
PENTHOUSE

TYPE TEN
PENTHOUSE



TOTAL AREA
302 sqm

TOTAL AREA
302 sqm

C1

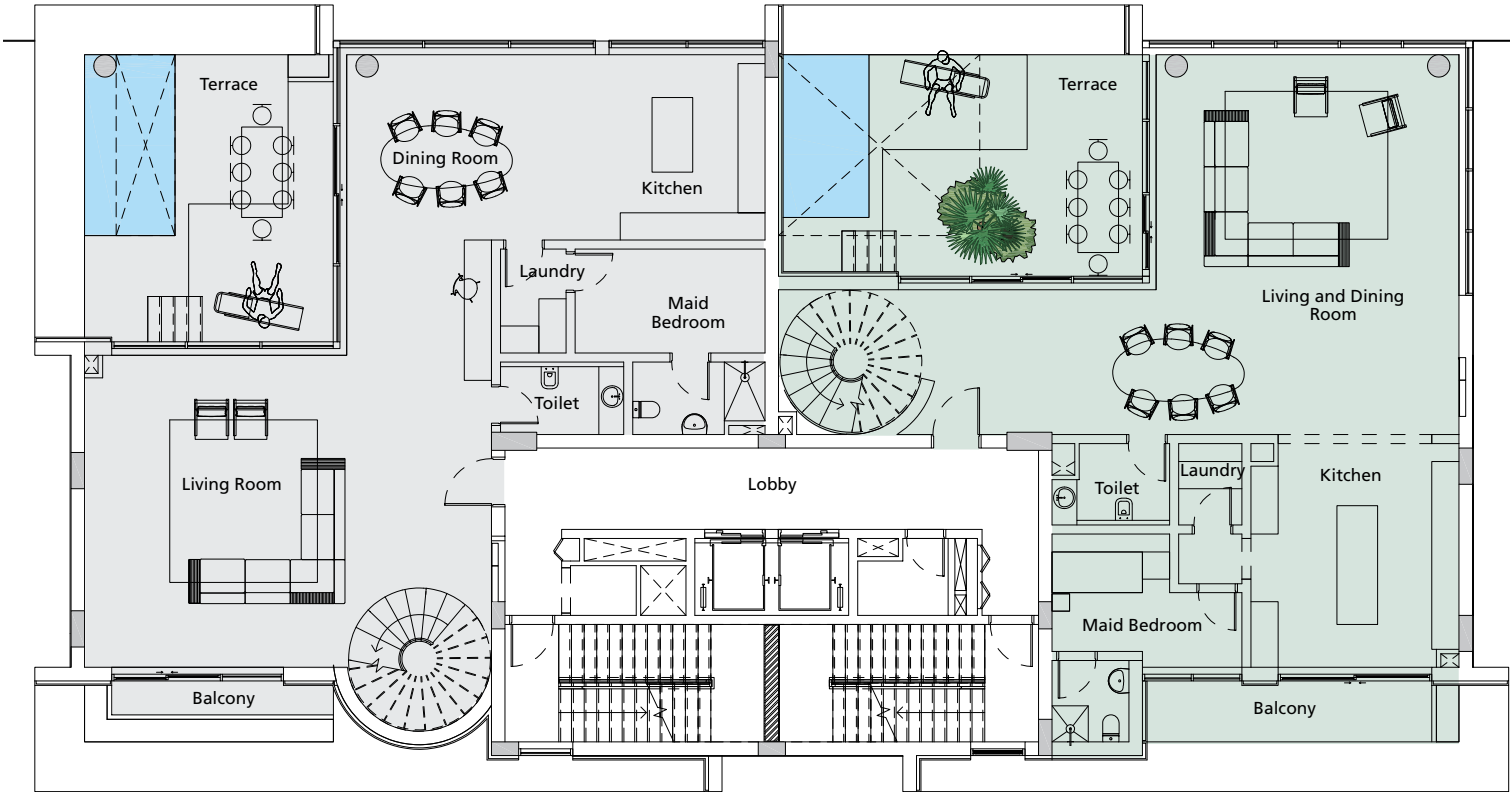


FIRST FLOOR

5 Storeys

TYPE ONE
DUPLEX

TYPE TWO
DUPLEX



TOTAL AREA
383 sqm

TOTAL AREA
390 sqm

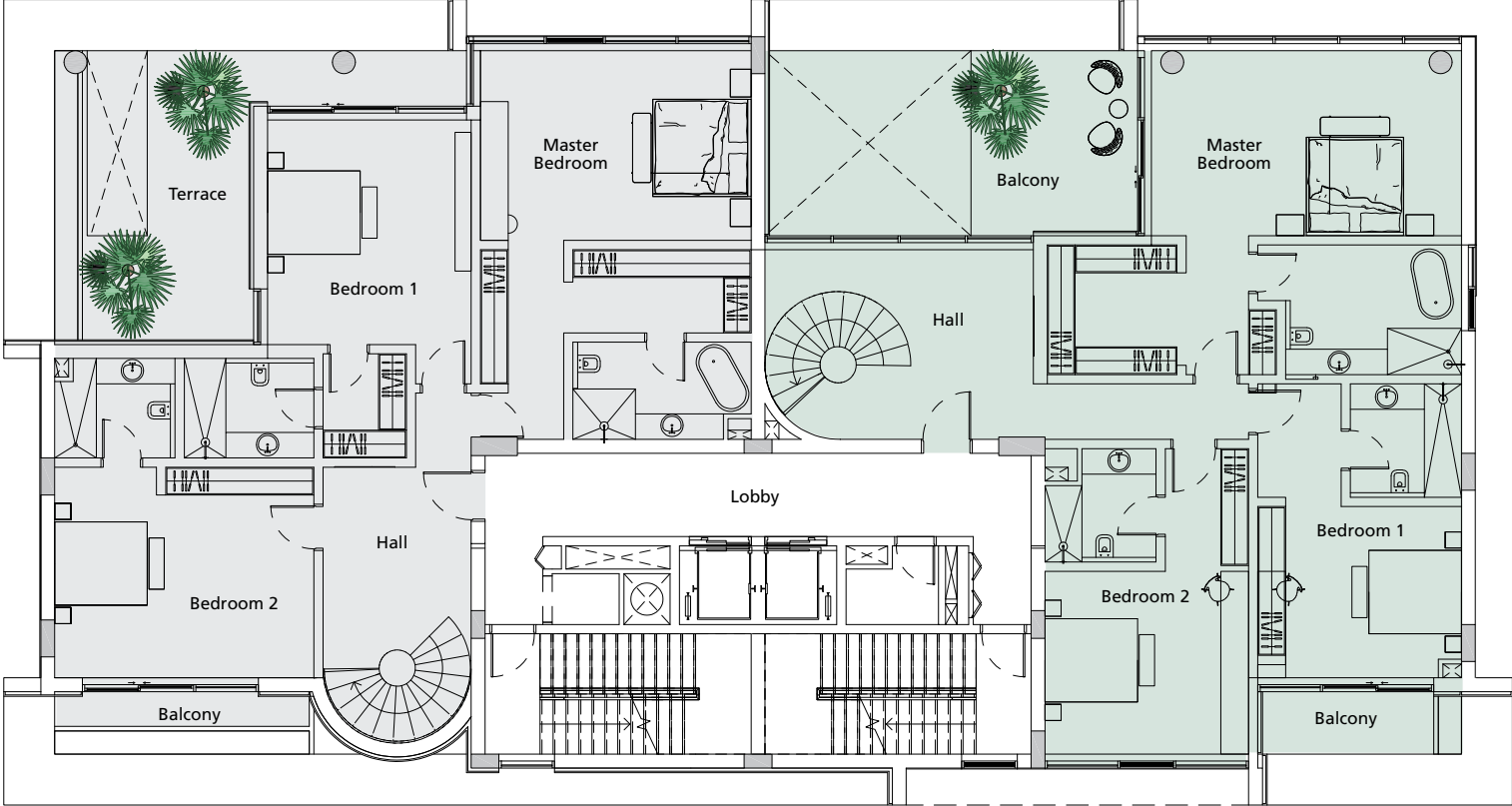
C2

SECOND FLOOR

5 Storeys

TYPE ONE
DUPLEX

TYPE TWO
DUPLEX



TOTAL AREA
383 sqm

TOTAL AREA
390 sqm

C2

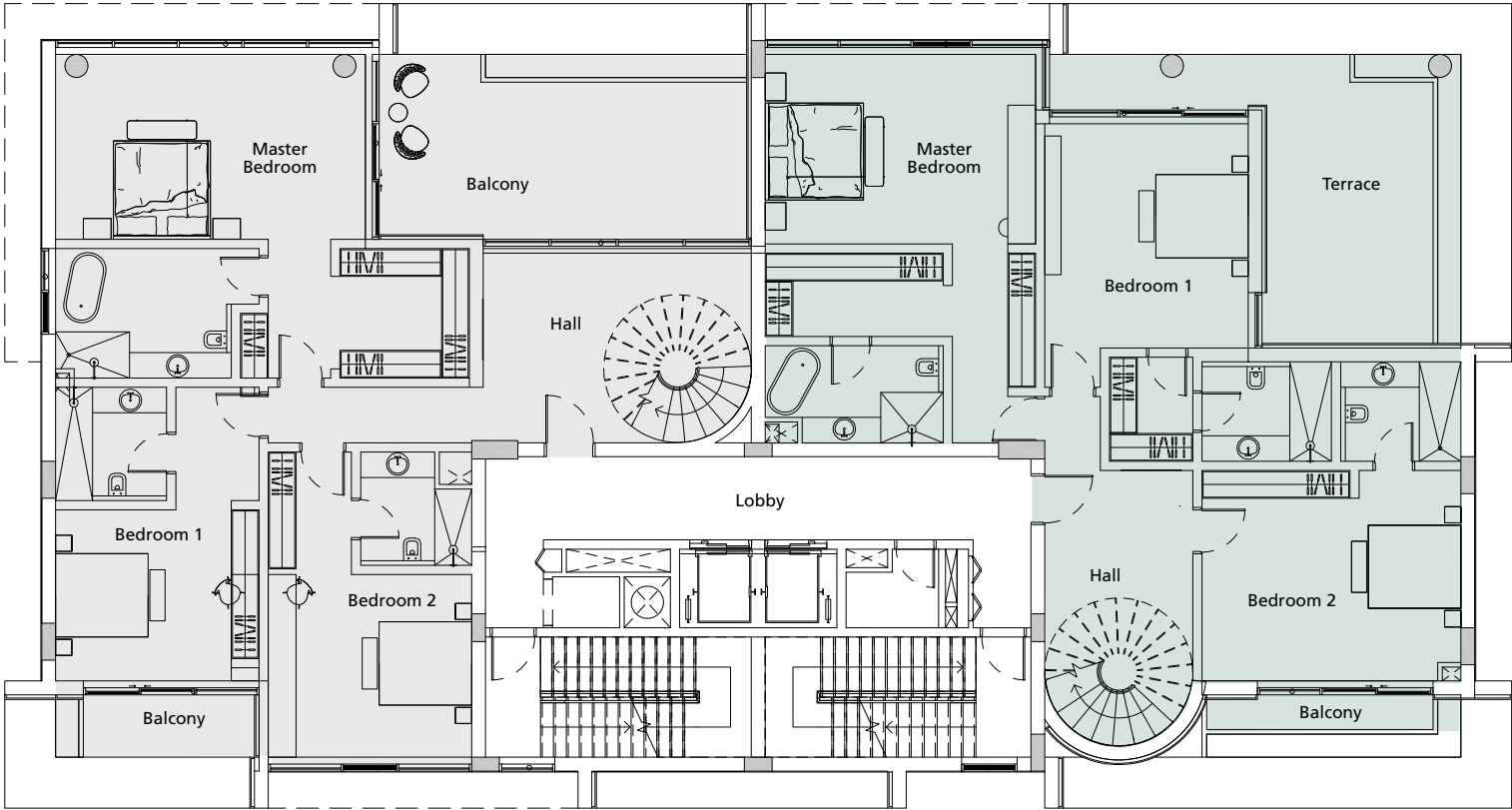
Disclaimer 1.Drawings are not to scale. 2.The architectural details, dimensions and area in this plan are based on Schematic Design information only, and final As-Built conditions may vary. 3.All units are sold as unfurnished apartments, without furniture and furnishings, without white goods provisions, etc. 4.All images used are for illustrative purposes only and do not represent the actual size, features, specifications, fittings, and furnishings. 5.Marina Bay reserves the right to make revisions/alterations, at its absolute discretion, and without liability.

THIRD FLOOR

5 Storeys

TYPE THREE
DUPLEX

TYPE FOUR
DUPLEX



TOTAL AREA
403 sqm

TOTAL AREA
397 sqm

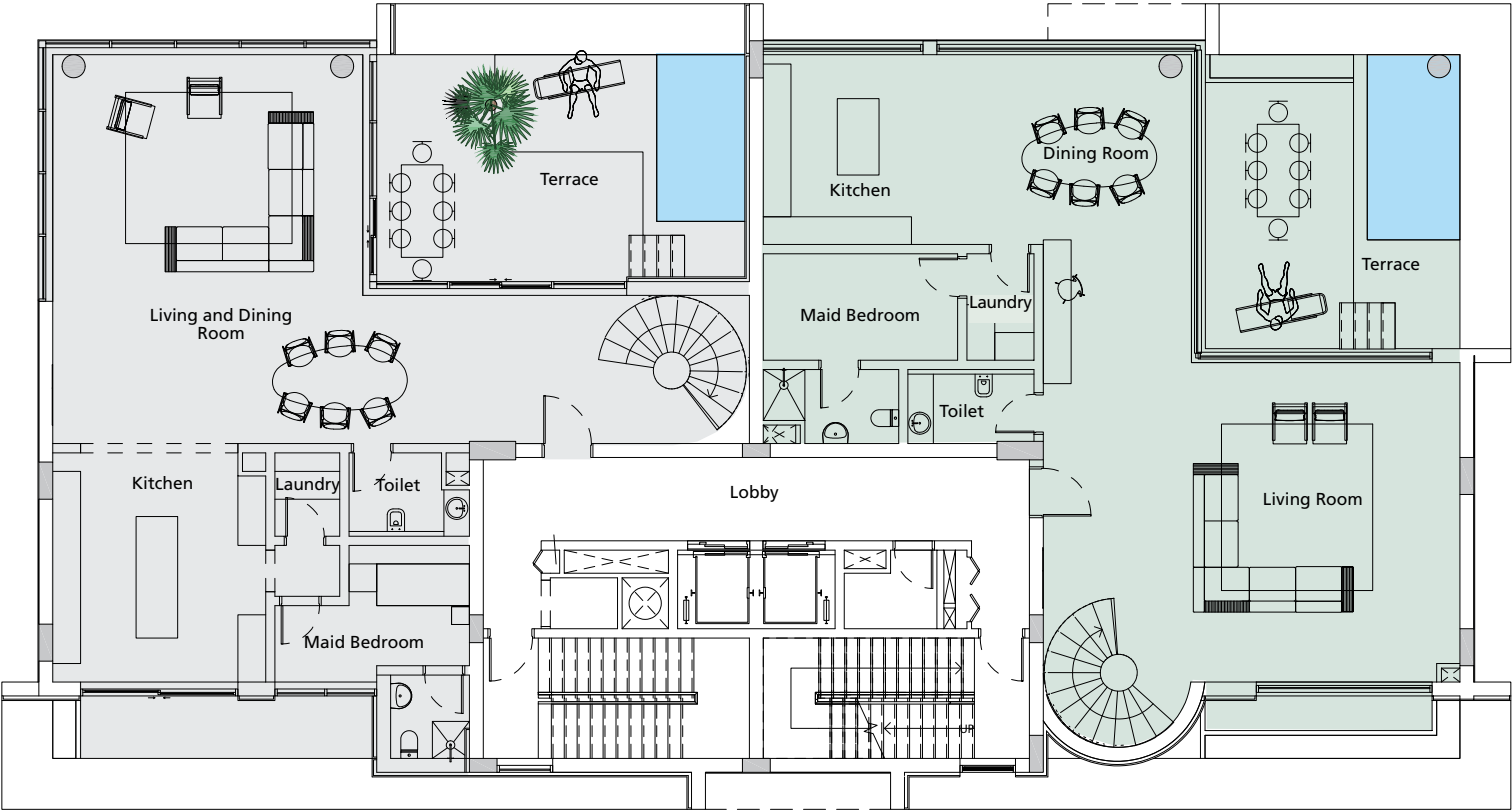
C2

FOURTH FLOOR

5 Storeys

TYPE THREE
DUPLEX

TYPE FOUR
DUPLEX



TOTAL AREA
403 sqm

TOTAL AREA
397 sqm

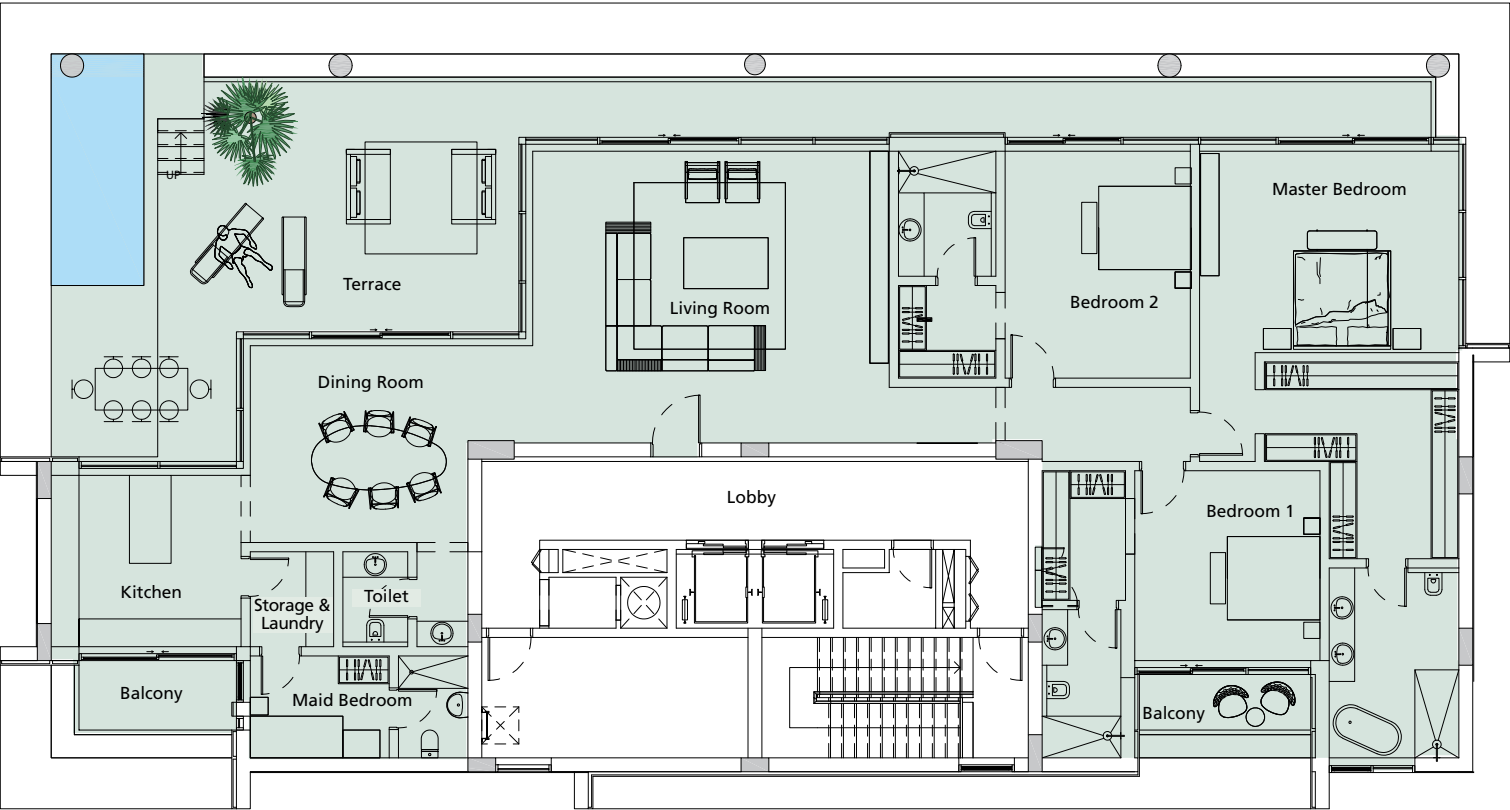
C2

Disclaimer 1. Drawings are not to scale. 2. The architectural details, dimensions and area in this plan are based on Schematic Design information only, and final As-Built conditions may vary. 3. All units are sold as unfurnished apartments, without furniture and furnishings, without white goods provisions, etc. 4. All images used are for illustrative purposes only and do not represent the actual size, features, specifications, fittings, and furnishings. 5. Marina Bay reserves the right to make revisions/alterations, at its absolute discretion, and without liability.

FIFTH FLOOR

5 Storeys

TYPE FIVE
PENTHOUSE



TOTAL AREA

402 sqm

C2

Disclaimer 1. Drawings are not to scale. 2. The architectural details, dimensions and area in this plan are based on Schematic Design information only, and final As-Built conditions may vary. 3. All units are sold as unfurnished apartments, without furniture and furnishings, without white goods provisions, etc. 4. All images used are for illustrative purposes only and do not represent the actual size, features, specifications, fittings, and furnishings. 5. Marina Bay reserves the right to make revisions/alterations, at its absolute discretion, and without liability.





marinabay.bh

VI
MARINA
BAY

REEF ISLAND