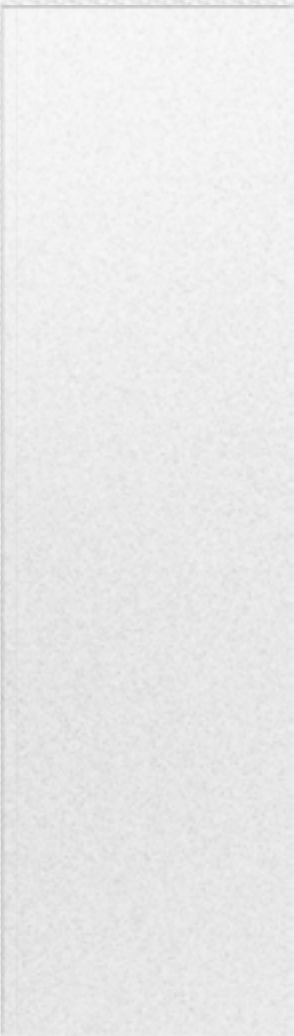


MARINA
BAY

REEF ISLAND





Life In Full Glory



EMBRACE A SLOWER PACE
OF LIFE IN A TRUE SLICE OF
ISLAND PARADISE
WHERE IDYLIC SEA VIEWS
COME ONE WITH CONTEMPORARY
ARCHITECTURE TO RE-IMAGINE
ELEVATED LUXURY FROM AN
ORIGINAL PERSPECTIVE.

A WORLD OF ITS OWN.

Marina bay is more than just an exclusive lifestyle, flowing with limitless possibilities in the heart of Bahrain, but rather a multi-sensory experience, promising to bring residents closer to nature and one another while surrounding them with soul-stirring views in every direction.



ORIGINAL PERSPECTIVE.
ELEVATED LUXURY FROM AN
ARCHITECTURE TO RE-IMAGINE
COME ONE WITH CONTEMPORARY
WHERE IDYLIC SEA VIEWS
ISLAND PARADISE
OF LIFE IN A TRUE SLICE OF
EMBRACE A SLOWER PACE



A WORLD OF ITS OWN.

Marina Bay is more than just an exclusive lifestyle, flowing with
limitless possibilities in the heart of Bahrain, but rather a multi-
sensory experience, promising to bring residents closer to nature
and one another while surrounding them with soul-stirring views
in every direction.



INTRODUCING



MARINA BAY



A Floating Lifestyle

Evoking Timeless Sentiments of Calm.

Marina Bay introduces a new era of floating luxury on 34,000 sqm where mesmerizing sea views stretch out as far as your imagination. Immaculately designed as a tight-knit island community in the heart of Bahrain, the iconic destination is a one-of-a-kind invitation to disconnect from the stresses of city life while reconnecting with pristine nature from the comfort of your own living room.

The elemental edge of Marina Bay lies in its breakthrough elevation technique that not only transforms every home into an open amphitheatre of sky and sea, but also breaks down the optimum in island tranquillity for your ultimate regeneration. Sleek, serene and highly sophisticated, Marina Bay is a waterfront reality where every villa dreams in all shades of blue to immerse you in

a floating lifestyle, born in water, basked in beauty and alive with select world-class amenities, enriching your very own island paradise.



Disclaimer 1. Drawings are not to scale. 2. The architectural details, dimensions and area in this plan are based on Schematic Design information only, and final As Built conditions may vary. 3. All units are sold as unfurnished apartments, without furniture and furnishings, without white goods provisions, etc. 4. All images used are for illustrative purposes only and do not represent the actual size, features, specifications, fittings, and furnishings. 5. Marina Bay reserves the right to make revisions/alterations, at its absolute discretion, and without liability.







A unique living experience
of uninterrupted solace
close to everywhere.

Location & Proximity

Marina Bay is smartly designed with residents' privacy and utmost convenience in mind. Therefore, the destination enjoys an ideal location in Reef Island which is nestled between Bahrain's City Centre, Seef District and the thriving financial harbour for those wishing to execute business next-door.

Interconnected to lively happenings from every direction, Marina Bay is directly linked to Bahrain's main highway network, allowing homeowners to reach anywhere they wish in record time.

Situated 15 minutes away from Bahrain International Airport, Marina Bay sets itself as a main intersection, that offers worlds of floating serenity to investors from around the world.

Getting there

5 minute drive to Bahrain Financial Harbour

5 minute drive to Bahrain City Centre and Seef District

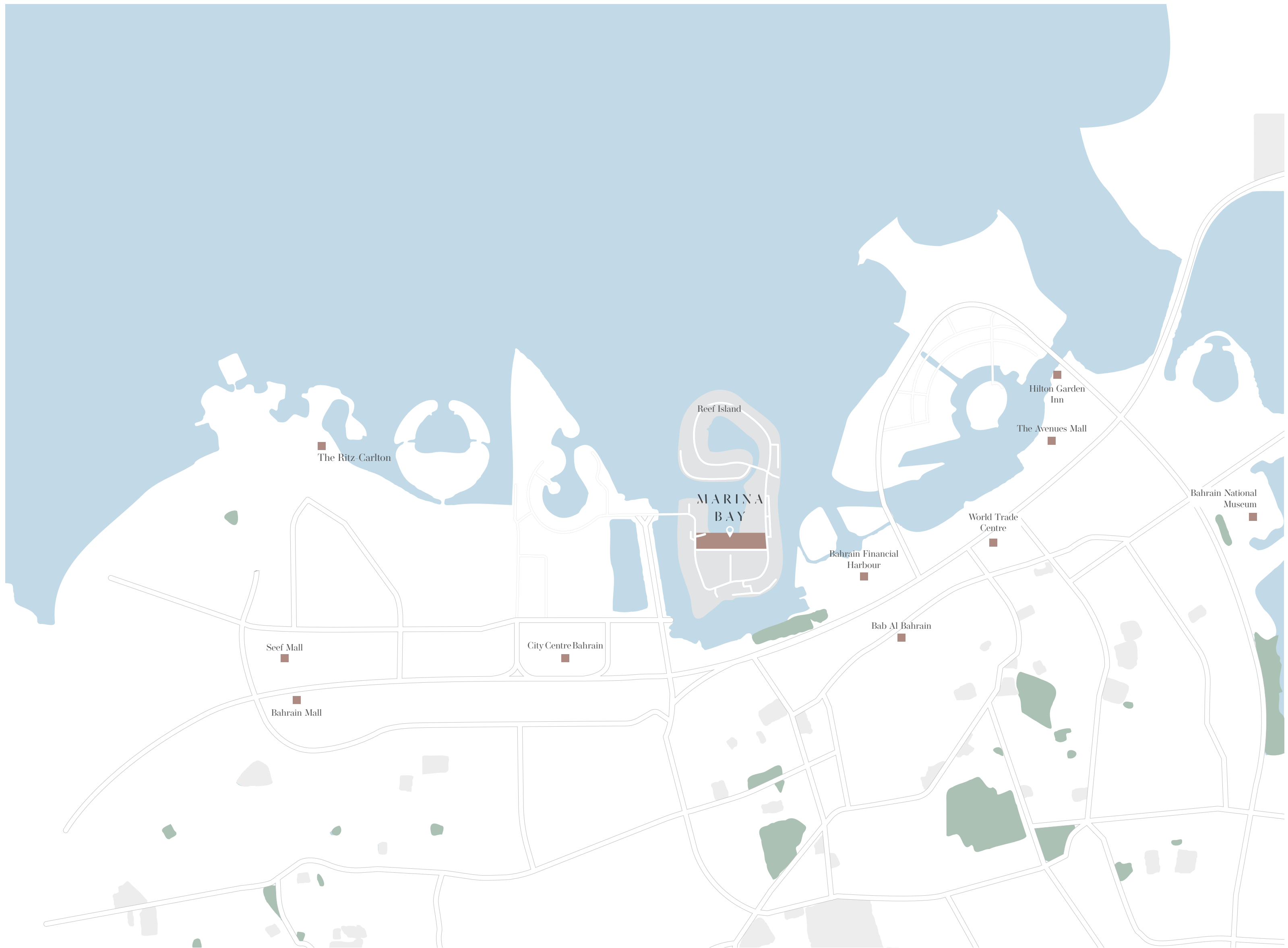
15 minute drive to Bahrain International Airport

20 minute drive to Saudi Causeway

30 minute drive to Bahrain International Circuit



A unique living experience
of uninterrupted solace
close to everywhere.









Artfully designed

around you

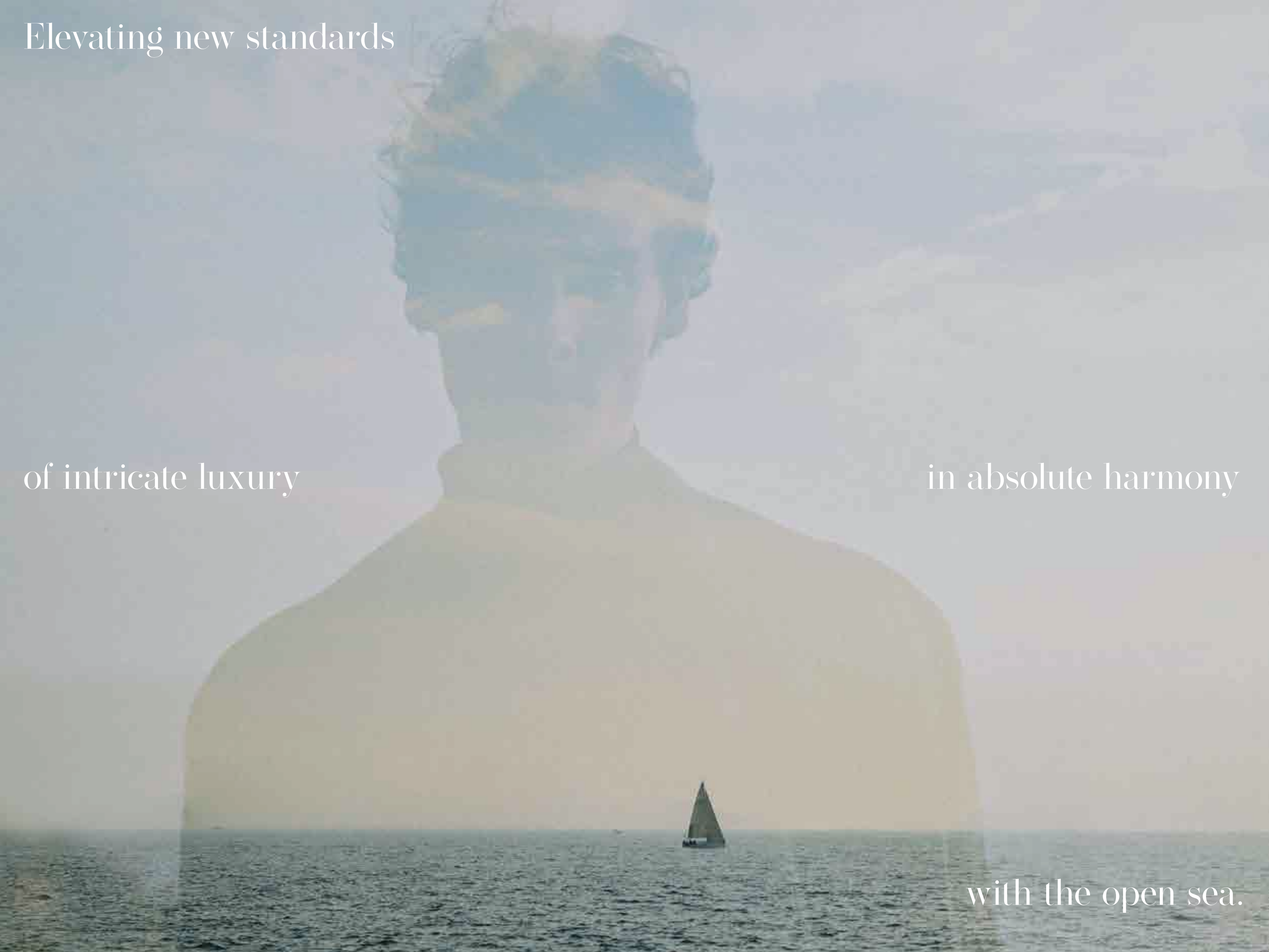


Designed by internationally acclaimed TAEP, Marina Bay adopts an open plan philosophy that re-defines the harmonious existence of people, nature and refined architecture on one breathtaking island.

The smart masterplan is carefully elevated around the vastness of the open sea, lending every villa type unobstructed views on an open horizon, as well as prolonged hours of sunlight and fresh breeze circulation for ultimate wellbeing.

By melding the best in sleek modern architecture and floating beauty, homes at Marina Bay are gracefully perched over the water to crown a front-row seat on timeless beauty, perfected by lush landscaping and pedestrian friendly paths winding along the project for daily recreation. Boasting a bustling marina that is a perfect launch pad for endless water adventures, Marina Bay is in short, the place to unwind on shimmering pools coming one with the open sea, sail away to make new discoveries or simply watch breathtaking sunsets, thanks to an ideal orientation that invites you to live a life of peaceful connection to nature.

and open views.

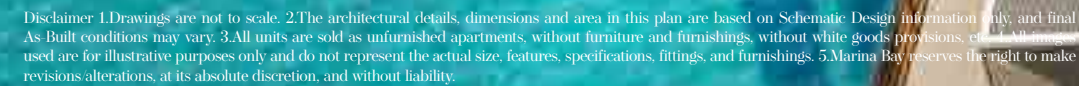


Elevating new standards

of intricate luxury

in absolute harmony

with the open sea.





An Architectural Marvel Blending Nature & Contemporary Elegance

At Marina Bay, it's hard to tell whether homes are a natural extension of the expansive sea or vice versa. Every elegantly-appointed villa offers a serene escape that seamlessly blends indoor and outdoor spaces, allowing for nature to bloom inside your personal space. Boasting a sleek and streamlined facade, each villa is smartly designed to maximize stunning sea views and natural daylight with floor-to-ceiling windows and expansive rooftop terraces that bring the outdoors in.

Dressed in a washed out pearl white colour, neutral stone and chic marble punctuations, your villa stands as a true testament to sustainable design, thanks to durable materials that resist the salty sea air while beautifully contrasting with the site's mesmerizing surroundings.





Landscaping & Boardwalks

A Breathing Lifestyle to Grow Forever Young.

Stepping into Marina Bay is like journeying through a private oasis of clam, lined with towering trees, native plantations and manicured gardens that directly open onto the tranquil blue sea. The signature island teleports residents to an evergreen dimension, thanks to a smart landscaping scheme that encourages seamless walkability through verdant boardwalks and safe pedestrian paths set against a magical backdrop.

Admired for being not only beautiful but also functional, the project's landscaping offers quiet shaded areas for homeowners to reflect and generous gardens luring the community to socialize in a sustainable ambience, second to none.



World-Class Amenities



Experience the best of island living where
world-class amenities come alive.





Where Film & Fantasy
Meet on an Island.

Marina Bay Cinema

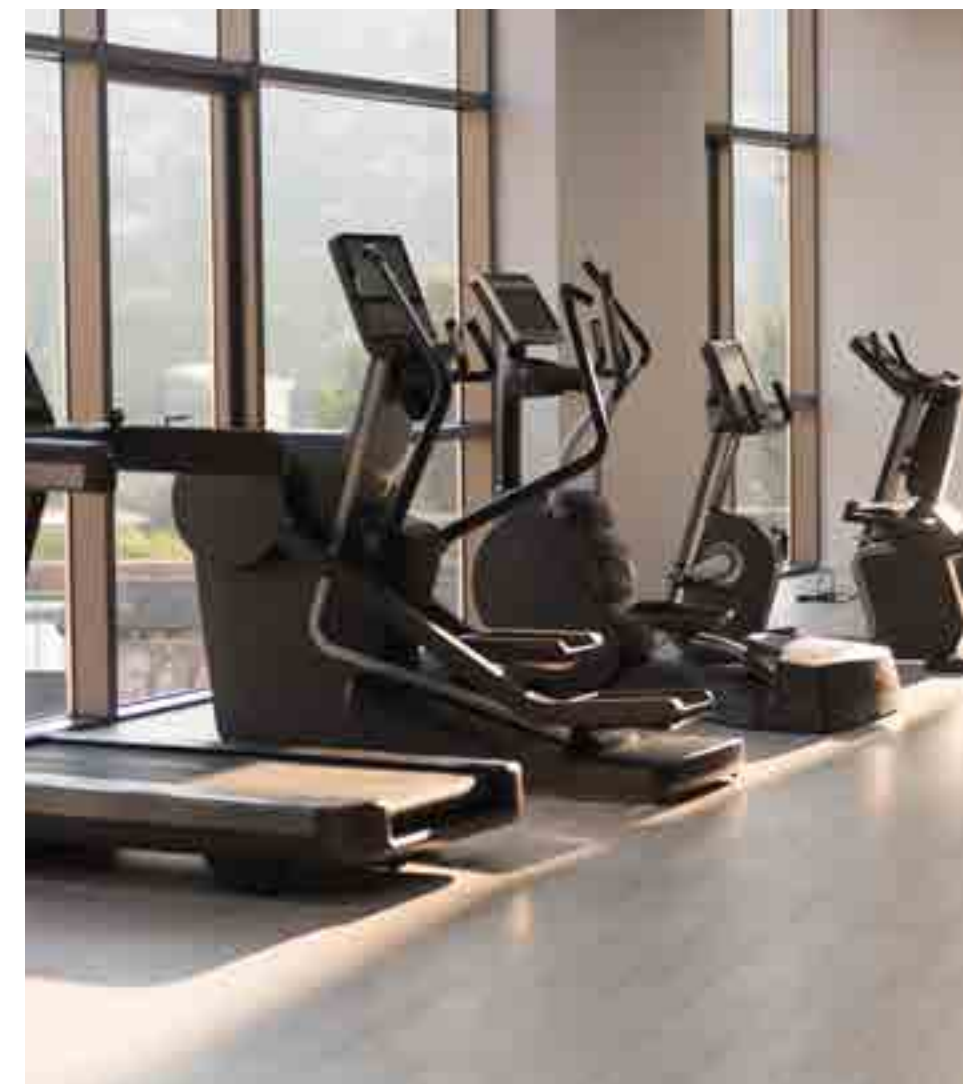
Imagine enjoying a quiet movie night with friends or family on one big cinema screen.

The cinema is more than just a place to watch movies, it's an exciting community spot, inviting everyone to connect over their love for nature and film.

Stay Fit in
Floating Surroundings

Marina Bay Gym

Every aspect of Marina Bay is carefully planned to promote a healthier lifestyle. The iconic island offers a state-of-the-art gym, inviting professional athletes and everyone wishing to remain fit to experience true wellness in inspirational settings.



Shimmering Pools

Touching the

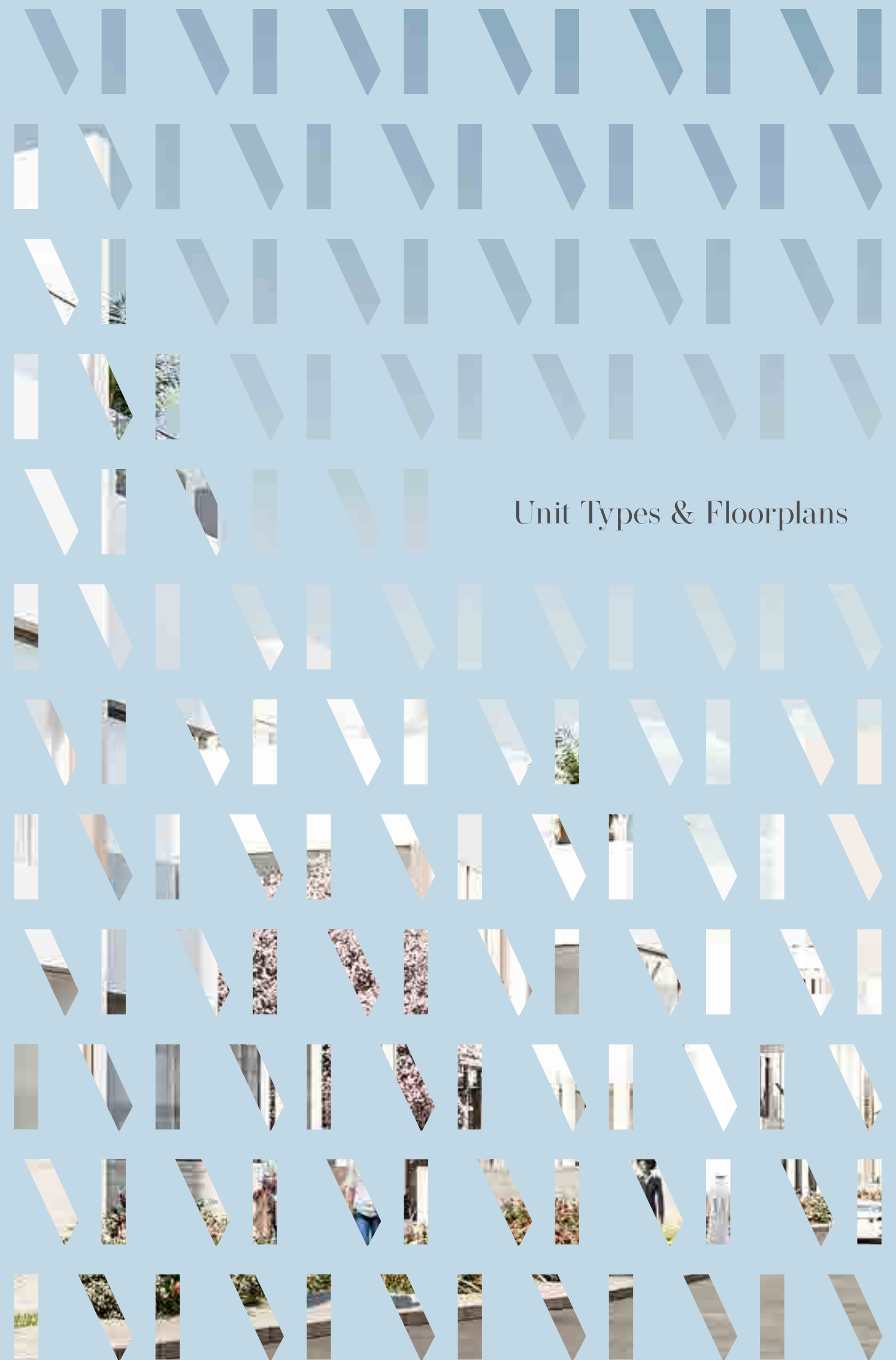


Open Sea

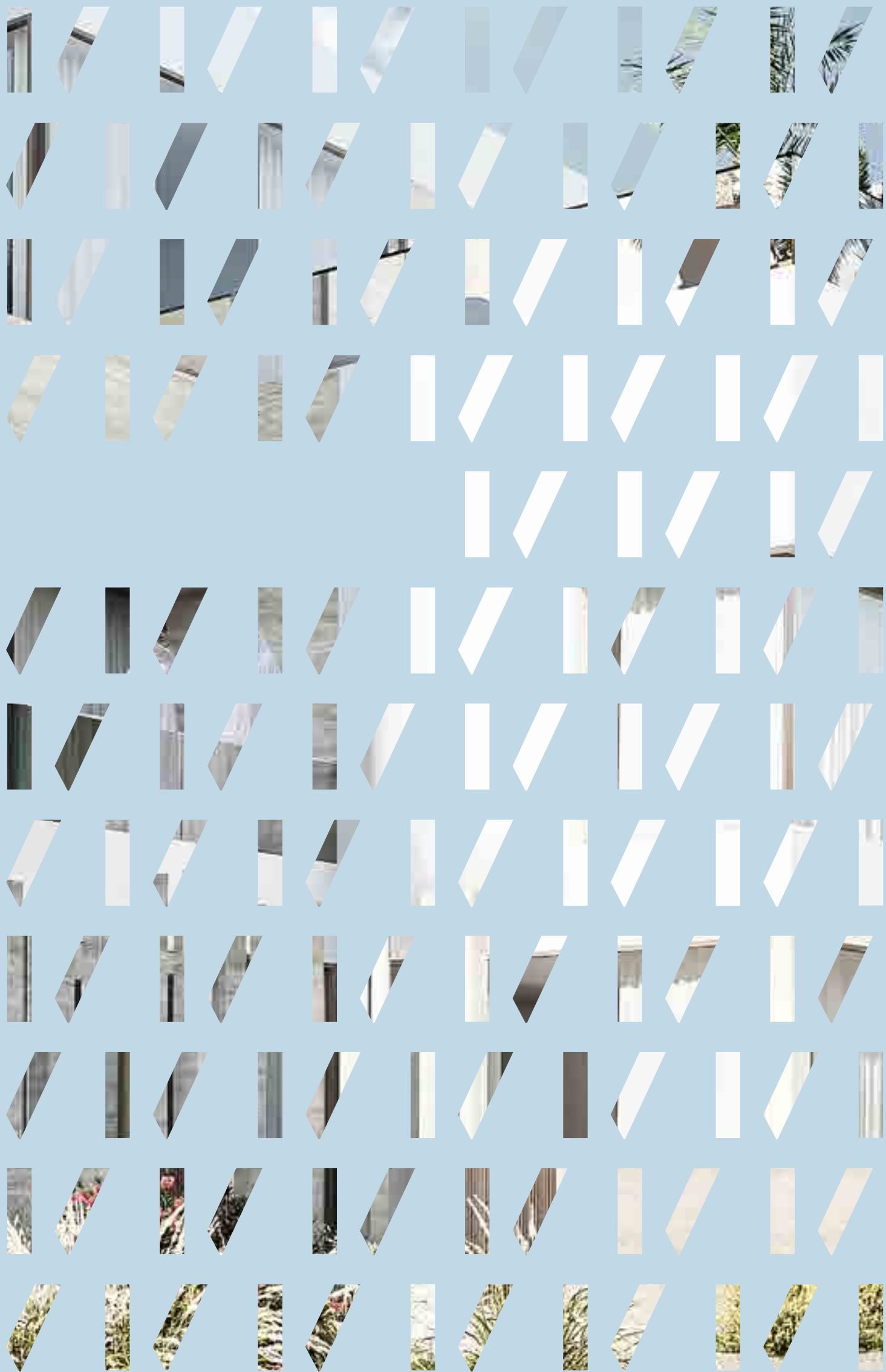
Marina Bay Swimming Pools

Whether you wish to spend the day lounging under the sun with a refreshing cocktail in hand or simply want to swim and refresh, as you take in open vistas of the deep blue sea, Marina Bay offers all that and much more.

Designed to maximize water-front beauty in every direction, Marina Bay invites you to dive deep and surface all new before captivating sea views.



Unit Types & Floorplans



A SLICE OF ISLAND PARADISE TO CALL HOME.



THE SIGNATURES
SERENEVILLAS
SKYVILLAS



THE

SIGNATURES





THE SIGNATURES

—

A1
A2
A3
A4







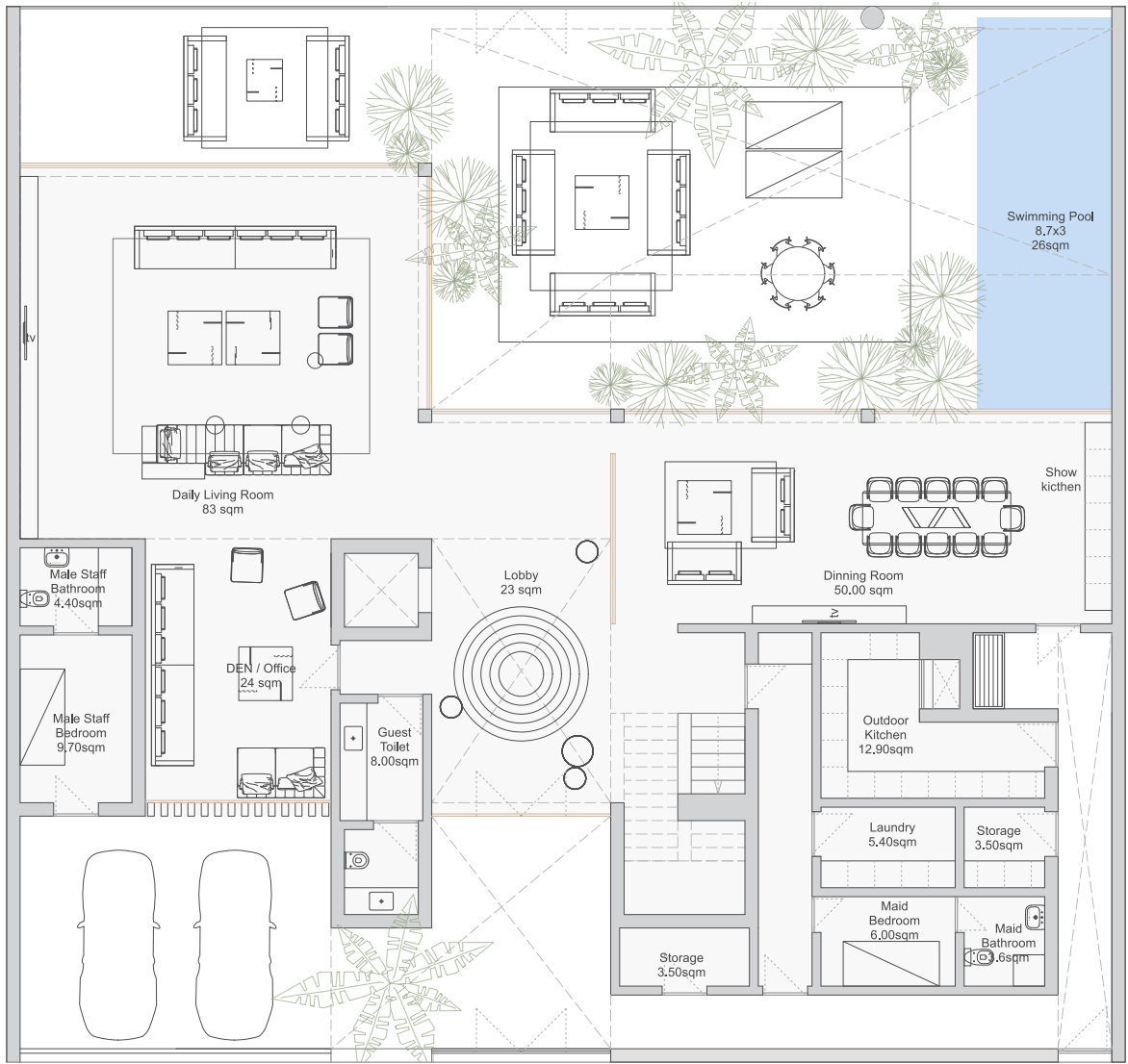


Plot 494sqm

2 Stories

GROUND FLOOR

255.6 sqm



LIVING ROOM
83 sqm

DINING ROOM
50 sqm

OUTDOOR KITCHEN
12.90 sqm

DEN / OFFICE
24 sqm

GUEST TOILET
8.00 sqm

STORAGE 1
3.50 sqm

LOBBY
23.00 sqm

LAUNDRY
5.40 sqm

STORAGE 2
3.50 sqm

MALE STAFF BEDROOM
9.70 sqm

MALE STAFF BATHROOM
4.40 sqm

MAID BEDROOM
6.00 sqm

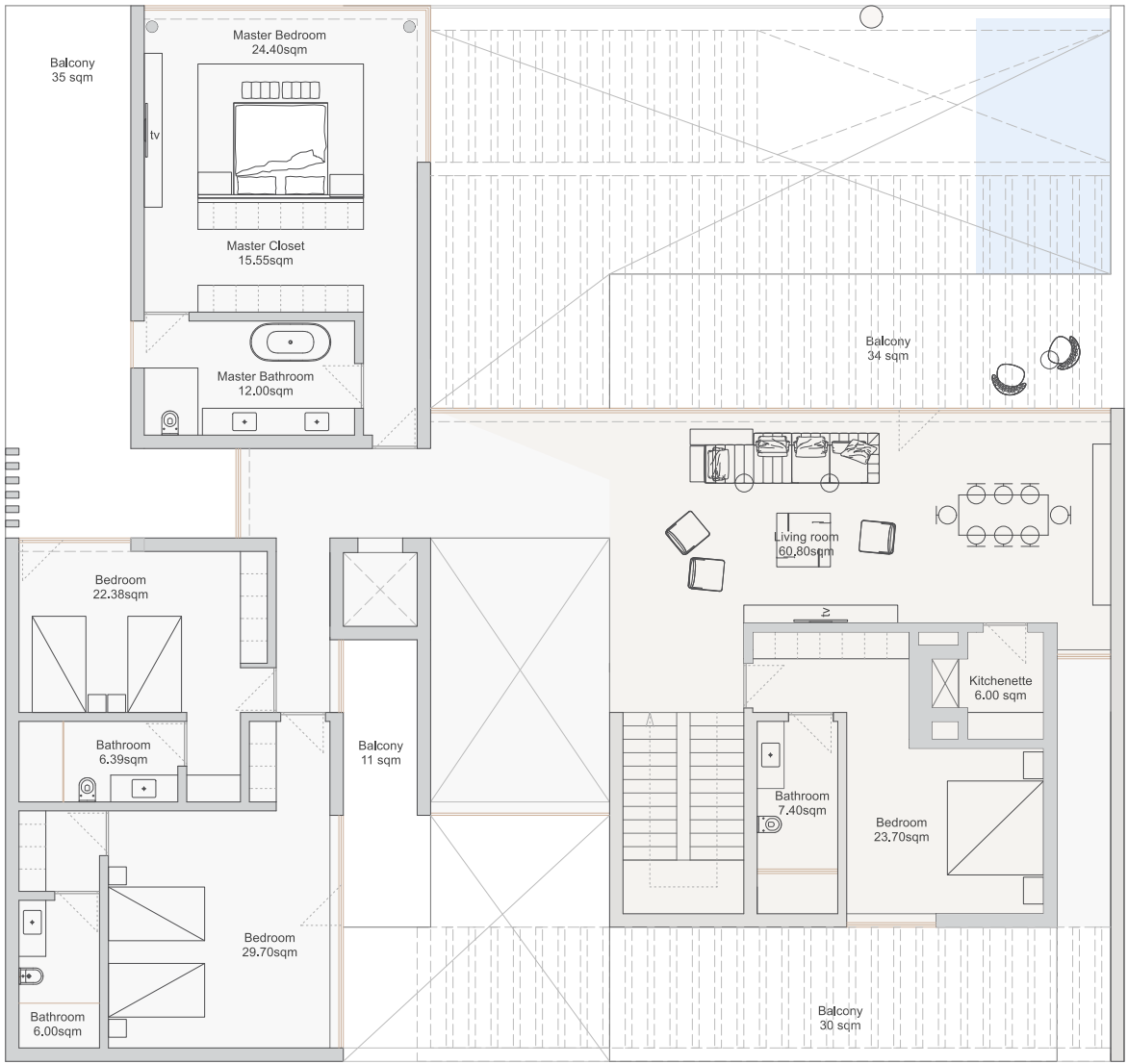
MAID BATHROOM
3.60 sqm

SWIMMING POOL
8.7×3 / 26sqm

A1

FIRST FLOOR

238 sqm



MASTER BEDROOM
24.40 sqm

MASTER BATHROOM
12.00 sqm

MASTER CLOSET
15.55 sqm

MASTER BALCONY
35 sqm

BEDROOM 1
22.38 sqm

BATHROOM
6.39 sqm

LIVING ROOM
60.80 sqm

KITCHENETTE
6.00 sqm

BEDROOM 2
29.70 sqm

BATHROOM
6.00 sqm

BALCONY 1
11 sqm

BEDROOM 3
23.70 sqm

BATHROOM
7.40 sqm

BALCONY 2
34 sqm

BALCONY 3
30 SQM

A1



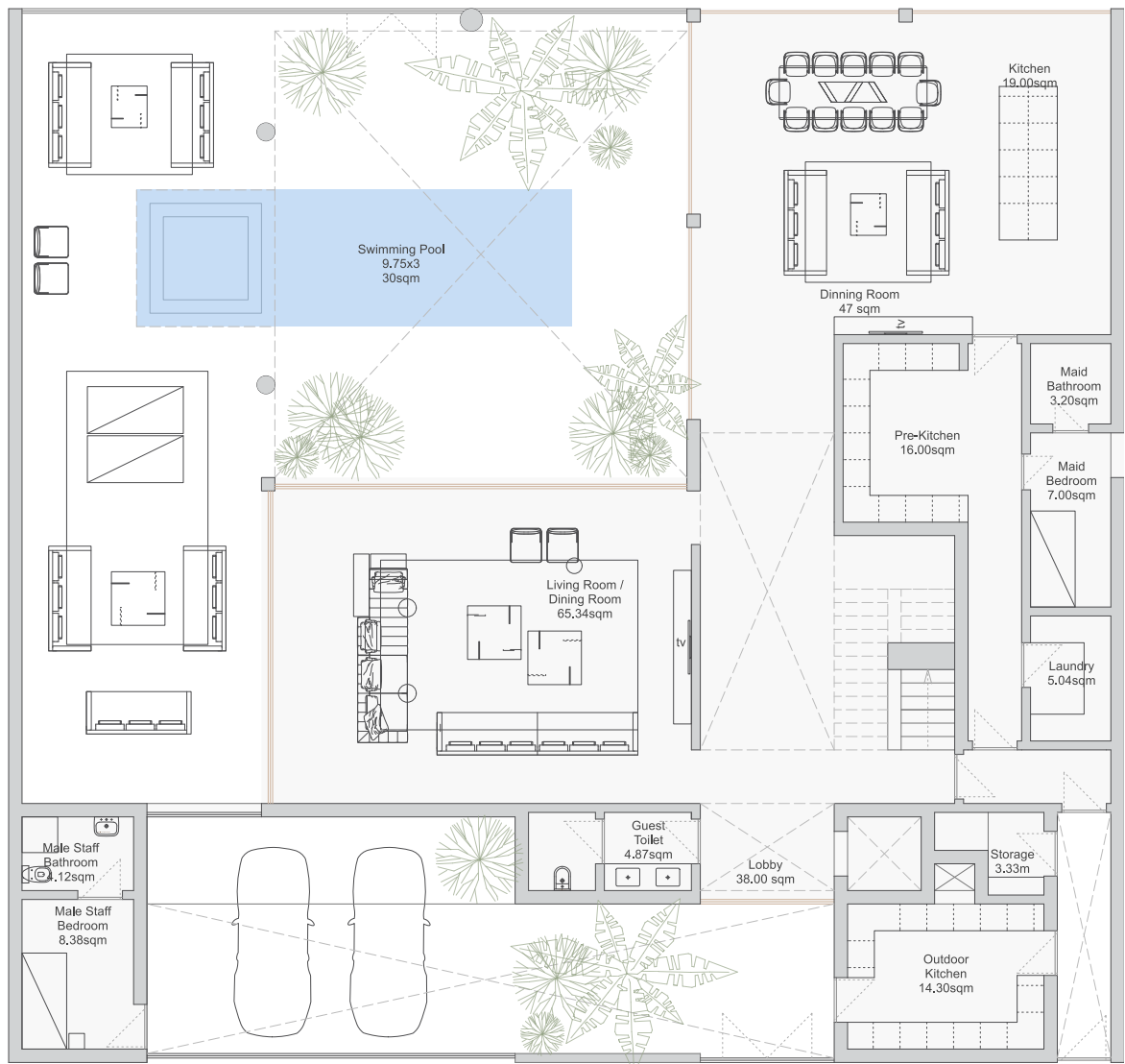


Area 485sqm

2 Stories

GROUND FLOOR

248.1 sqm



LIVING ROOM
83 sqm

DINING ROOM
50 sqm

OUTDOOR KITCHEN
12.90 sqm

DEN / OFFICE
24 sqm

GUEST TOILET
8.00 sqm

STORAGE 1
3.50 sqm

LOBBY
23.00 sqm

LAUNDRY
5.40 sqm

STORAGE 2
3.50 sqm

MALE STAFF BEDROOM
9.70 sqm

MALE STAFF BATHROOM
4.40 sqm

MAID BEDROOM
6.00 sqm

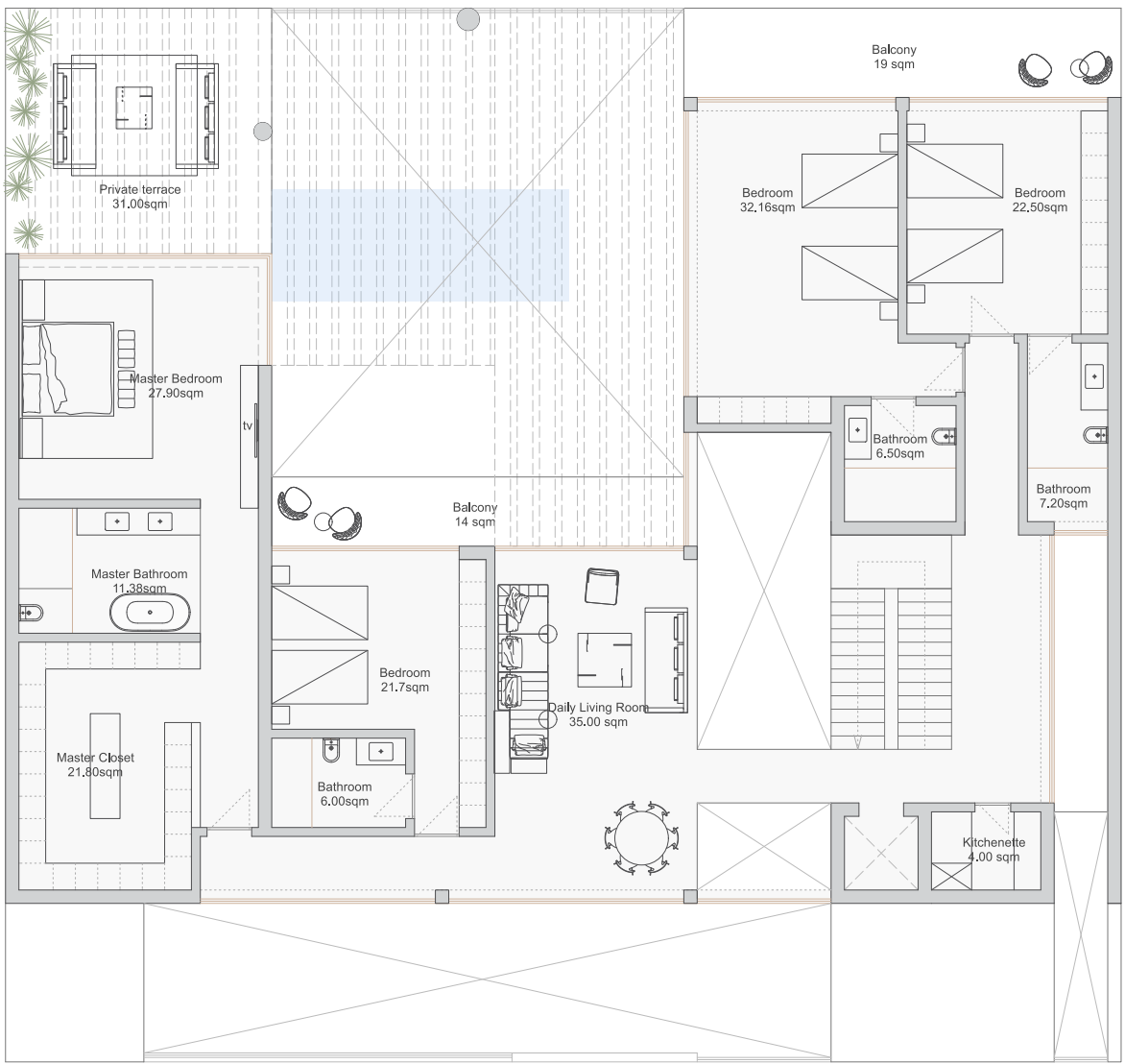
MAID BATHROOM
3.60 sqm

SWIMMING POOL
8.7*3 / 26sqm

A2

FIRST FLOOR

236.5 sqm



MASTER BEDROOM
24.40 sqm

MASTER BATHROOM
12.00 sqm

MASTER CLOSET
15.55 sqm

MASTER BALCONY
35 sqm

BEDROOM 1
22.38 sqm

BATHROOM
6.39 sqm

LIVING ROOM
60.80 sqm

KITCHENETTE
6.00 sqm

BEDROOM 2
29.70 sqm

BATHROOM
6.00 sqm

BALCONY 1
11 sqm

BEDROOM 3
23.70 sqm

BATHROOM
7.40 sqm

BALCONY 2
34 sqm

BALCONY 3
30 SQM

A2



Disclaimer 1.Drawings are not to scale. 2.The architectural details, dimensions and area in this plan are based on Schematic Design information only, and final As Built conditions may vary. 3.All units are sold as unfurnished apartments, without furniture and furnishings, without white goods provisions, etc. 4.All images used are for illustrative purposes only and do not represent the actual size, features, specifications, fittings, and furnishings. 5.Marina Bay reserves the right to make revisions/alterations, at its absolute discretion, and without liability.



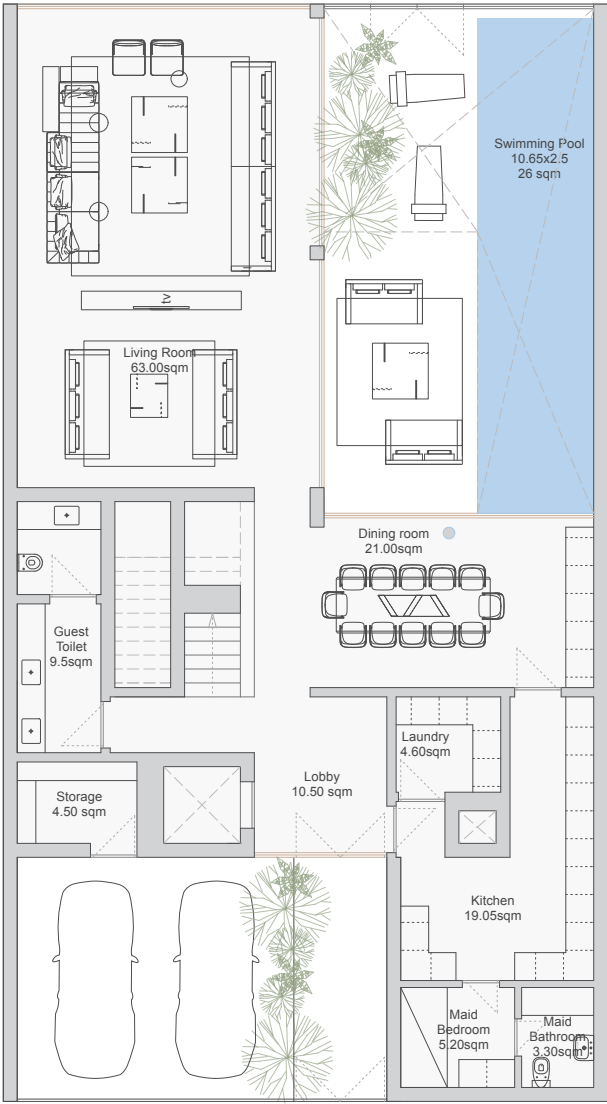


Area 331sqm

2 Stories

GROUND FLOOR

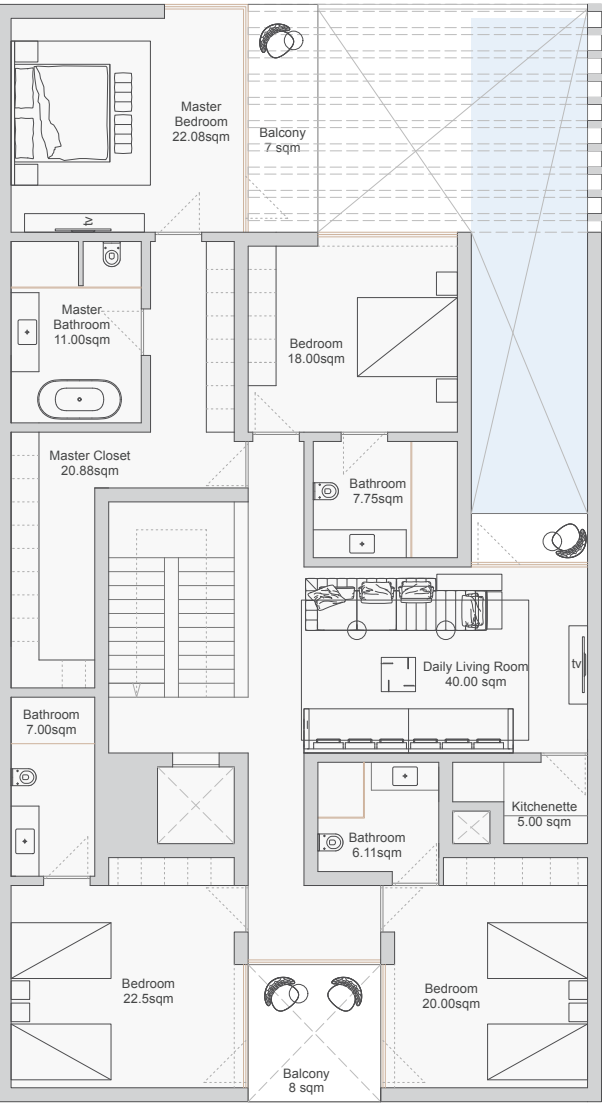
150.1 sqm



LIVING ROOM 63.00 sqm	LOBBY 10.50 sqm
DINING ROOM 21.00 sqm	LAUNDRY 4.60 sqm
KITCHEN 19.05 sqm	MAID BEDROOM 5.20 sqm
GUEST TOILET 9.50 sqm	MAID BATHROOM 3.30 sqm
STORAGE 4.50 sqm	SWIMMING POOL 10.65 x 2.5 / 26sqm

FIRST FLOOR

180.6 sqm



MASTER BEDROOM 22.08 sqm	KITCHENETTE 5.00 sqm
MASTER BATHROOM 11.00 sqm	BEDROOM 2 22.5 sqm
MASTER CLOSET 20.88 sqm	BATHROOM 7.00 sqm
MASTER BALCONY 7 sqm	BEDROOM 3 20.00 sqm
BEDROOM 1 18.00 sqm	BATHROOM 6.11 sqm
BATHROOM 7.75 sqm	BALCONY 8 sqm
DAILY LIVING ROOM 40.00 sqm	

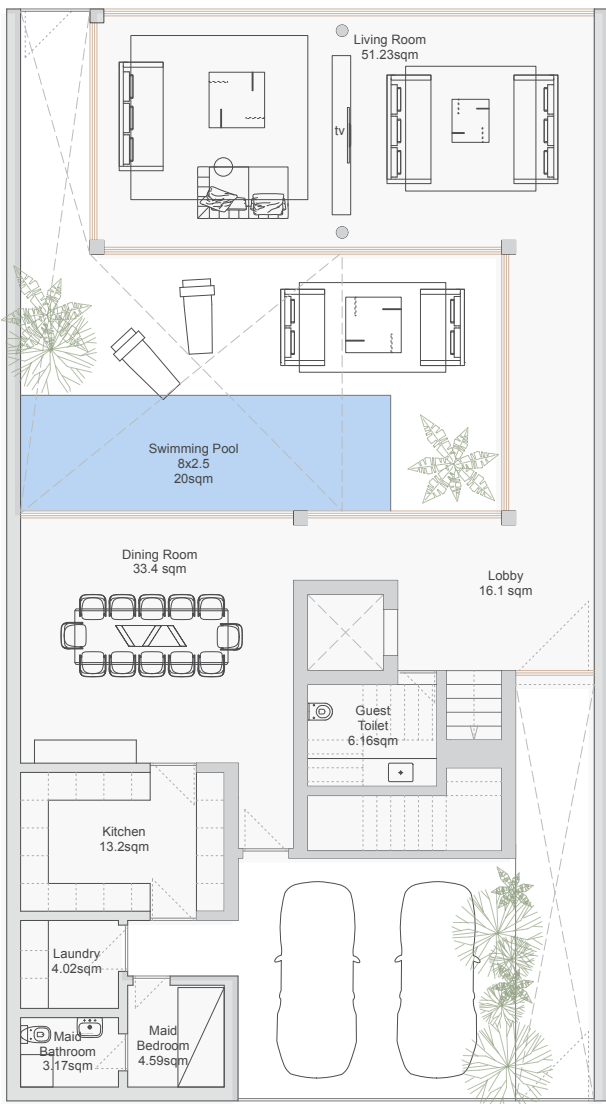
A3

Area 309sqm

2 Stories

GROUND FLOOR

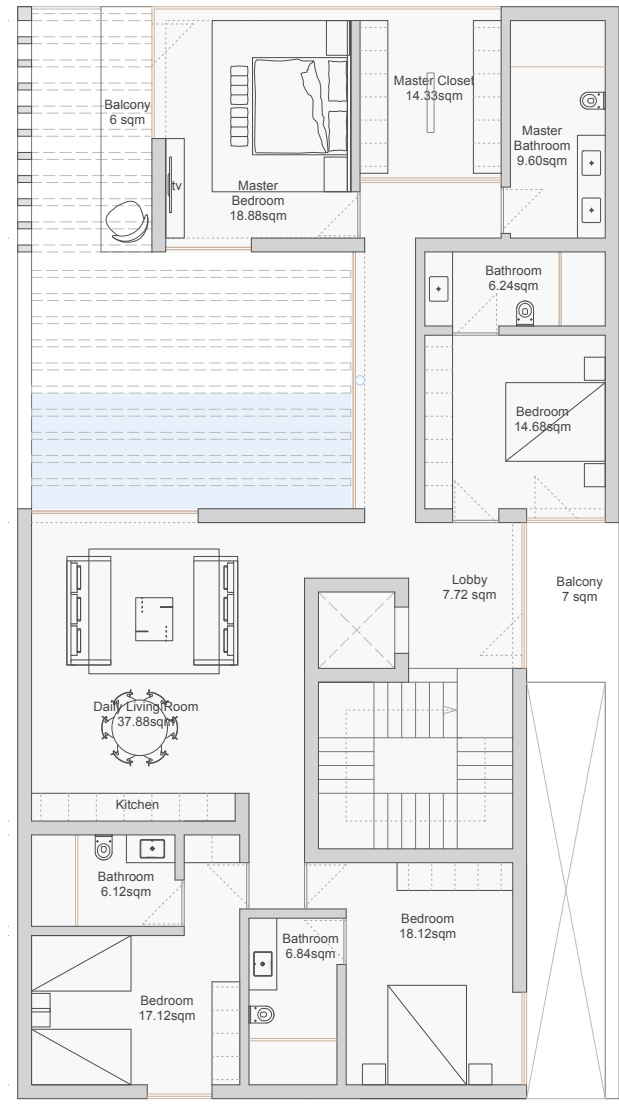
140.1 sqm



LIVING ROOM 63.00 sqm	LOBBY 10.50 sqm
DINING ROOM 21.00 sqm	LAUNDRY 4.60 sqm
KITCHEN 19.05 sqm	MAID BEDROOM 5.20 sqm
GUEST TOILET 9.50 sqm	MAID BATHROOM 3.30 sqm
STORAGE 4.50 sqm	SWIMMING POOL 10.65 x 2.5 / 26sqm

FIRST FLOOR

168.6 sqm



MASTER BEDROOM 22.08 sqm	KITCHENETTE 5.00 sqm
MASTER BATHROOM 11.00 sqm	BEDROOM 2 22.5 sqm
MASTER CLOSET 20.88 sqm	BATHROOM 7.00 sqm
MASTER BALCONY 7 sqm	BEDROOM 3 20.00 sqm
BEDROOM 1 18.00 sqm	BATHROOM 6.11 sqm
BATHROOM 7.75 sqm	BALCONY 8 sqm
DAILY LIVING ROOM 40.00 sqm	

A4



SERENE

VILLAS



SERENE VILLAS

—
B1
B2
B3







VILLA

TYPE

B1

Disclaimer 1.Drawings are not to scale. 2.The architectural details, dimensions and area in this plan are based on Schematic Design information only, and final As Built conditions may vary. 3.All units are sold as unfurnished apartments, without furniture and furnishings, without white goods provisions, etc. 4.All images used are for illustrative purposes only and do not represent the actual size, features, specifications, fittings, and furnishings. 5.Marina Bay reserves the right to make revisions/alterations, at its absolute discretion, and without liability.

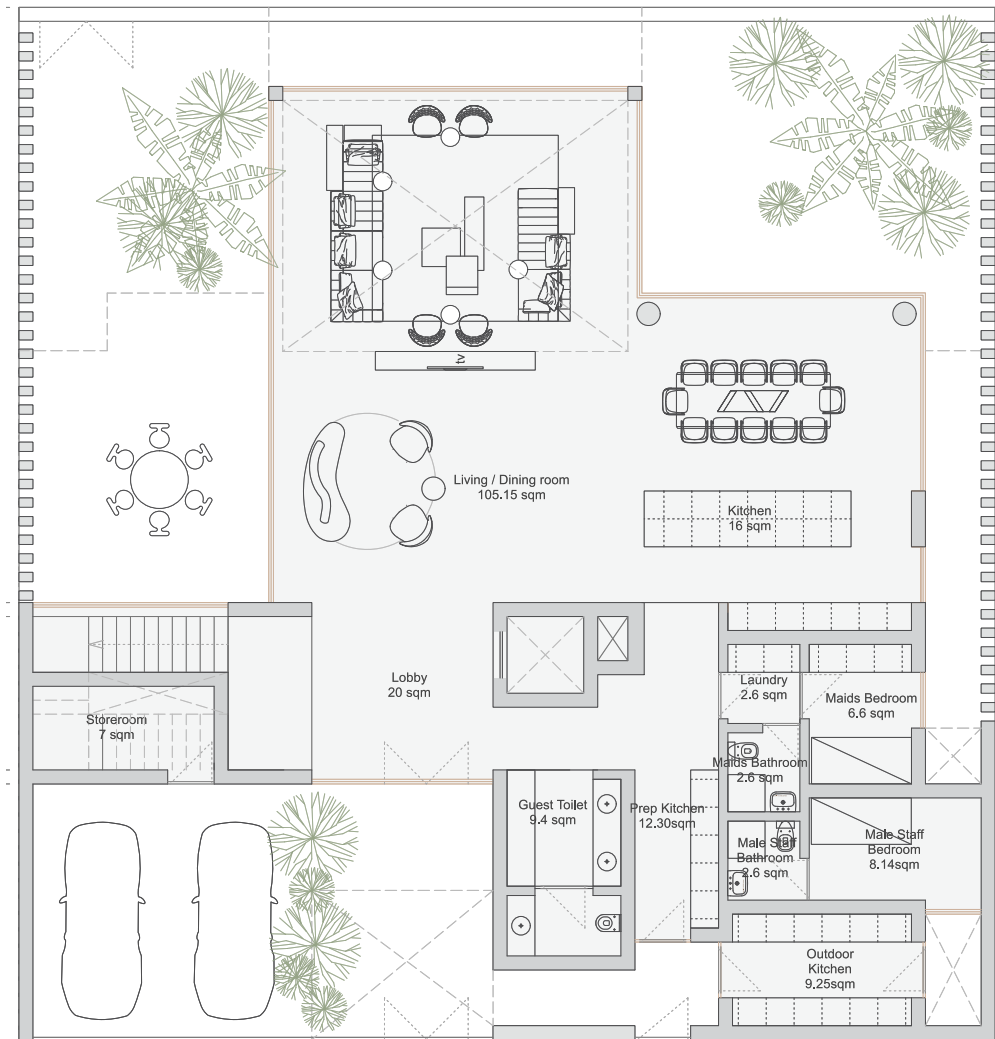


Area 548sqm

3 Stories

GROUND FLOOR

206.6 sqm



- LIVING / DINING ROOM
80.00 sqm
- KITCHEN
16.00 sqm
- PREP KITCHEN
12.30 sqm
- OUTDOOR KITCHEN
9.25 sqm
- GUEST TOILET
9.40 sqm

- STOREROOM
7.00 sqm
- LOBBY
20.00 sqm
- LAUNDRY
2.60 sqm
- MAID BEDROOM
6.60 sqm
- MAID BATHROOM
2.60 sqm

- MALE STAFF BEDROOM
8.14 sqm
- MALE STAFF BATHROOM
2.60 sqm

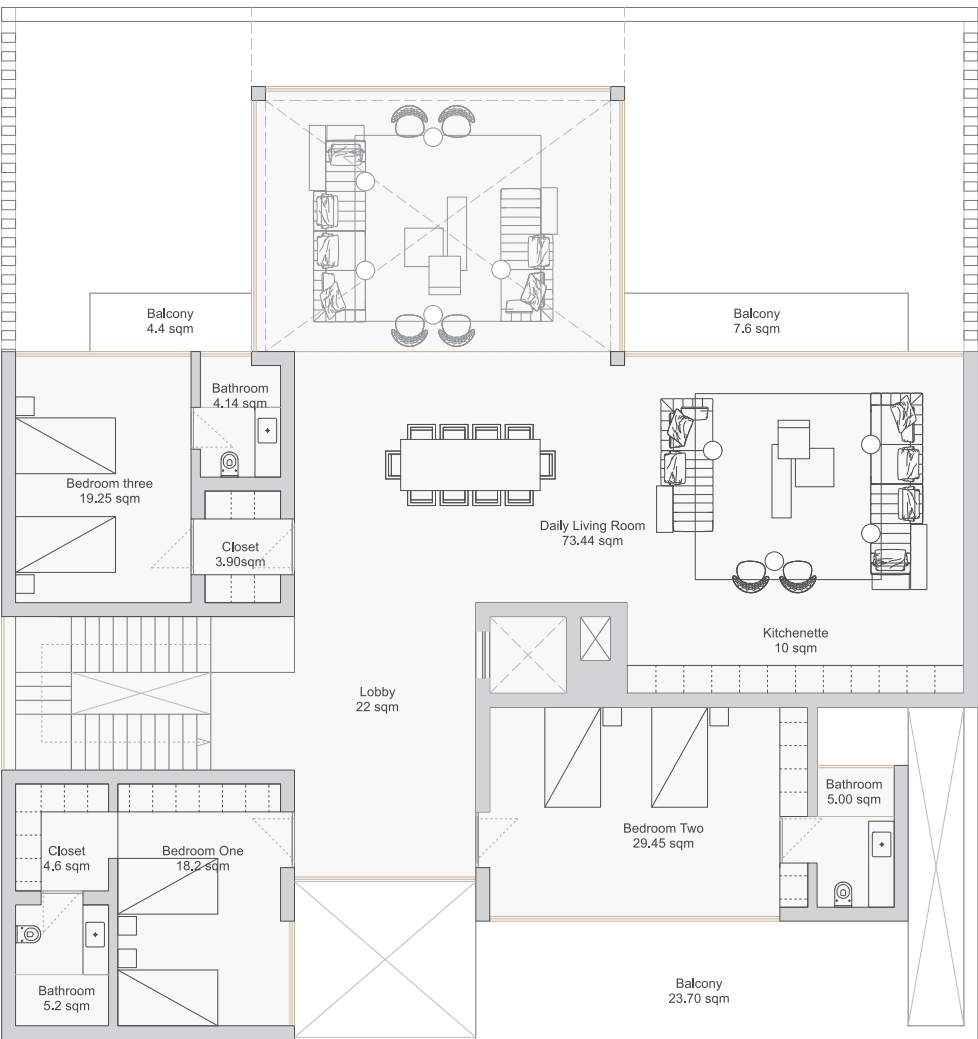
B1

Area 548sqm

3 Stories

FIRST FLOOR

199.1 sqm



- BEDROOM 1
18.20 sqm
- BATHROOM
5.20 sqm
- CLOSET
4.60 sqm
- BEDROOM 2
29.45 sqm
- BATHROOM
5.00 sqm

- LIVING ROOM
73.44 sqm
- KITCHENETTE
10.00 sqm
- LOBBY
22.00 sqm
- BEDROOM 3
19.25 sqm
- BATHROOM
4.14 sqm

- CLOSET
3.90 sqm
- BALCONY 1
4.40 sqm
- BALCONY 2
7.60 sqm
- BALCONY 3
23.70 sqm

B1

Disclaimer 1.Drawings are not to scale. 2.The architectural details, dimensions and area in this plan are based on Schematic Design information only, and final As-Built conditions may vary. 3.All units are sold as unfurnished apartments, without furniture and furnishings, without white goods provisions, etc. 4.All images used are for illustrative purposes only and do not represent the actual size, features, specifications, fittings, and furnishings. 5.Marina Bay reserves the right to make revisions alterations, at its absolute discretion, and without liability.

Area 548sqm

3 Stories

Area 548sqm

3 Stories

SECOND FLOOR

142.1 sqm



LOUNGE AREA
40.45 sqm

LOBBY
19.90 sqm

BATHROOM
6.00 sqm

MASTER BEDROOM
41.23 sqm

MASTER BATHROOM
20.47 sqm

MASTER CLOSET
14.00 sqm

PATIO
5.89 sqm

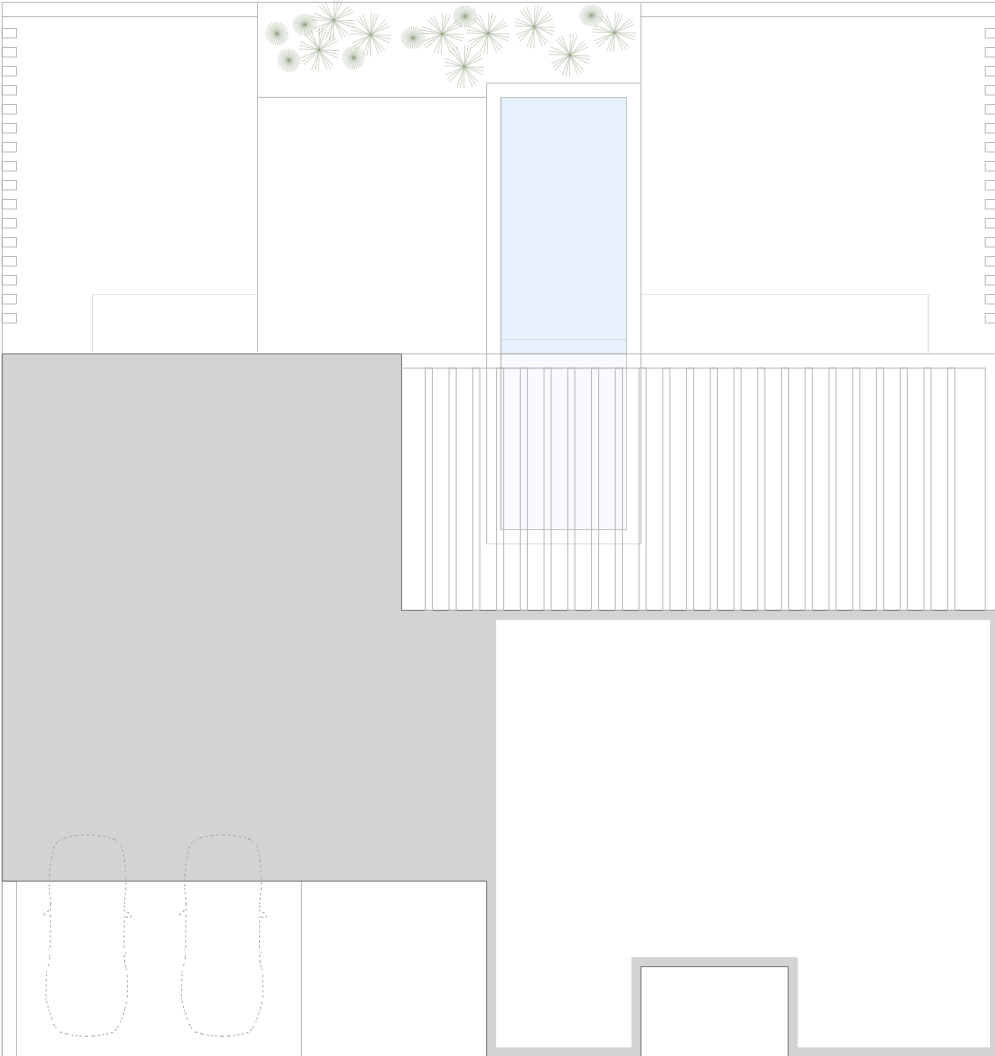
SHADE BALCONY
39.15 sqm

TERRACE
40.12 sqm

SWIMMING POOL
9.10 · 2.65 / 24.12 sqm

B1

ROOF



B1

Disclaimer 1.Drawings are not to scale. 2.The architectural details, dimensions and area in this plan are based on Schematic Design information only, and final As-Built conditions may vary. 3.All units are sold as unfurnished apartments, without furniture and furnishings, without white goods provisions, etc. 4.All images used are for illustrative purposes only and do not represent the actual size, features, specifications, fittings, and furnishings. 5.Marina Bay reserves the right to make revisions alterations, at its absolute discretion, and without liability.





Disclaimer 1.Drawings are not to scale. 2.The architectural details, dimensions and area in this plan are based on Schematic Design information only, and final As Built conditions may vary. 3.All units are sold as unfurnished apartments, without furniture and furnishings, without white goods provisions, etc. 4.All images used are for illustrative purposes only and do not represent the actual size, features, specifications, fittings, and furnishings. 5.Marina Bay reserves the right to make revisions/alterations, at its absolute discretion, and without liability.



Area 362 sqm

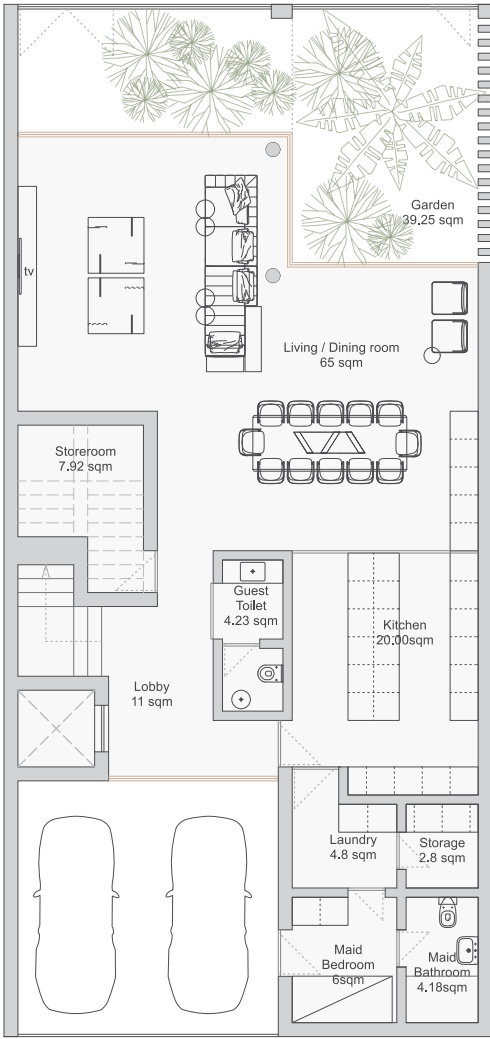
3 Stories

Area 362 sqm

3 Stories

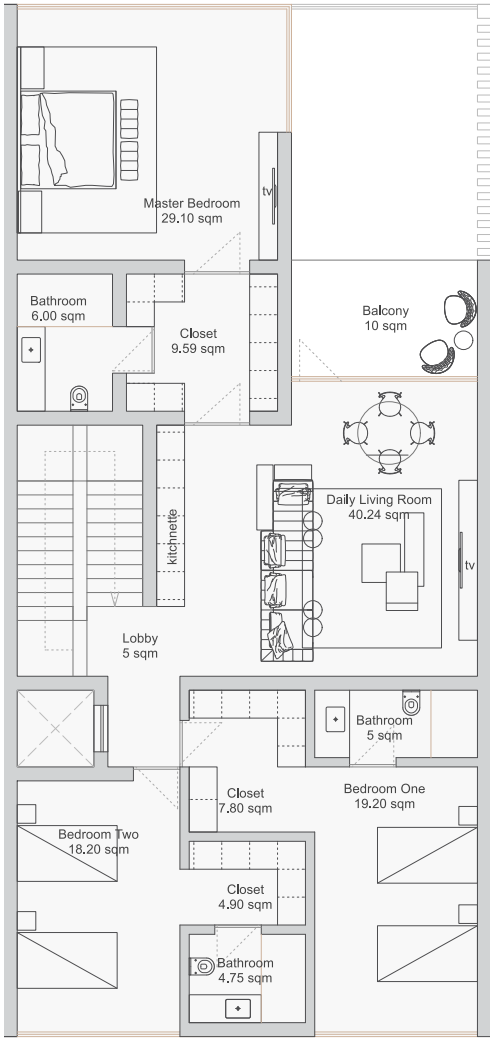
GROUND FLOOR

126.4 sqm



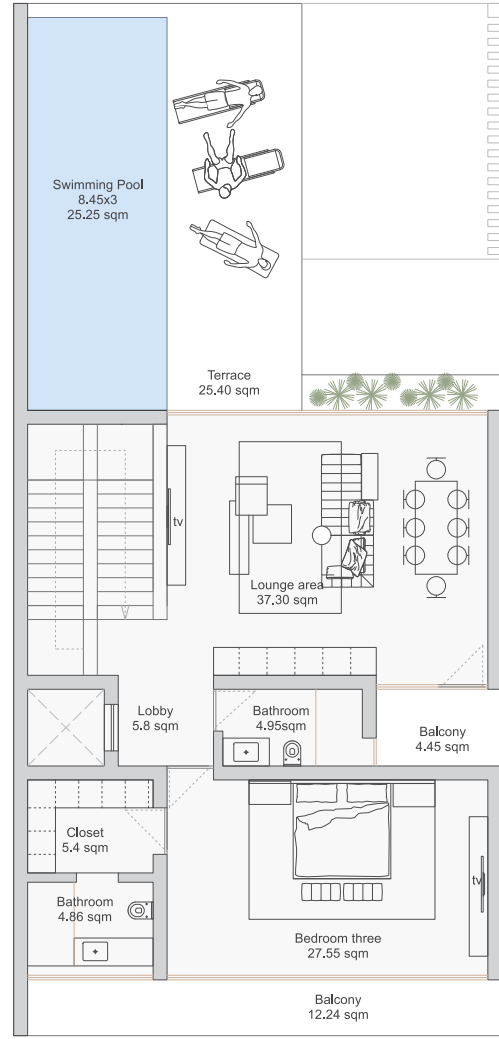
FIRST FLOOR

149.9 sqm



SECOND FLOOR

85.8 sqm



ROOF



LIVING / DINING 65.00 sqm	LAUNDRY 4.80 sqm
KITCHEN 20.00 sqm	STORAGE 2.80 sqm
GUEST TOILET 4.23 sqm	MAID BEDROOM 6.00 sqm
STOREROOM 7.92 sqm	MAID BATHROOM 4.18 sqm
LOBBY 11.00 sqm	GARDEN 39.25 sqm

MASTER BEDROOM 29.10 sqm	BATHROOM 5.00 sqm
MASTER BATHROOM 6.00 sqm	LIVING ROOM 40.24 sqm
MASTER CLOSET 9.59 sqm	LOBBY 5.00 sqm
BALCONY 1 10.00 sqm	BEDROOM 2 18.20 sqm
BEDROOM 1 19.20 sqm	BATHROOM 4.75 sqm
CLOSET 7.80 sqm	CLOSET 4.90 sqm

LOUNGE AREA 37.30 sqm	CLOSET 5.40 sqm
LOBBY 5.80 sqm	BALCONY 1 4.45 sqm
BATHROOM 4.95 sqm	BALCONY 2 12.24 sqm
BEDROOM 3 27.55 sqm	TERRACE 25.40 sqm
BATHROOM 4.86 sqm	SWIMMING POOL 8.45 x 3 / 25.25 sqm

B2

B2

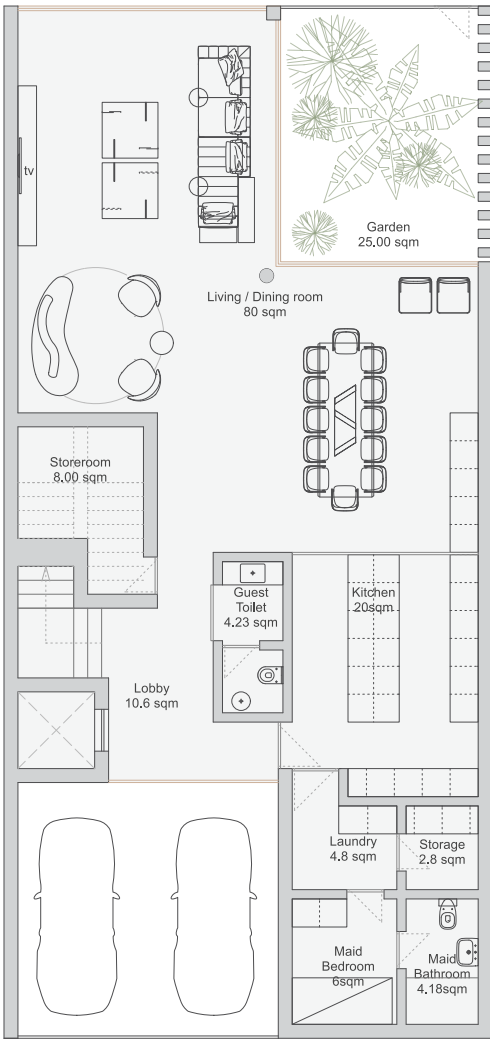
Disclaimer 1.Drawings are not to scale. 2.The architectural details, dimensions and area in this plan are based on Schematic Design information only, and final As-Built conditions may vary. 3.All units are sold as unfurnished apartments, without furniture and furnishings, without white goods provisions, etc. 4.All images used are for illustrative purposes only and do not represent the actual size, features, specifications, fittings, and furnishings. 5.Marina Bay reserves the right to make revisions/alterations, at its absolute discretion, and without liability.

Area 381 sqm

3 Stories

GROUND FLOOR

140 sqm



LIVING / DINING
80.00 sqm

KITCHEN
20.00 sqm

GUEST TOILET
4.23 sqm

STOREROOM
8.00 sqm

LOBBY
10.60 sqm

LAUNDRY
4.80 sqm

STORAGE
2.80 sqm

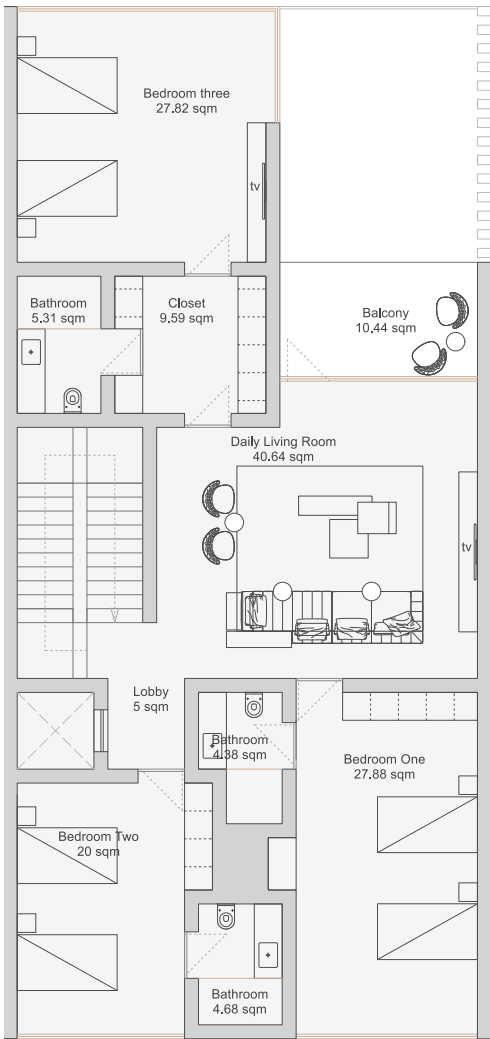
MAID BEDROOM
6.00 sqm

MAID BATHROOM
4.18 sqm

GARDEN
25.00 sqm

FIRST FLOOR

145.4 sqm



BEDROOM 1
27.88 sqm

BATHROOM
4.38 sqm

BEDROOM 2
20.00 sqm

BATHROOM
4.68 sqm

LIVING ROOM
40.64 sqm

LOBBY
5.00 sqm

BEDROOM 3
27.82 sqm

BATHROOM
5.31 sqm

CLOSET
9.59 sqm

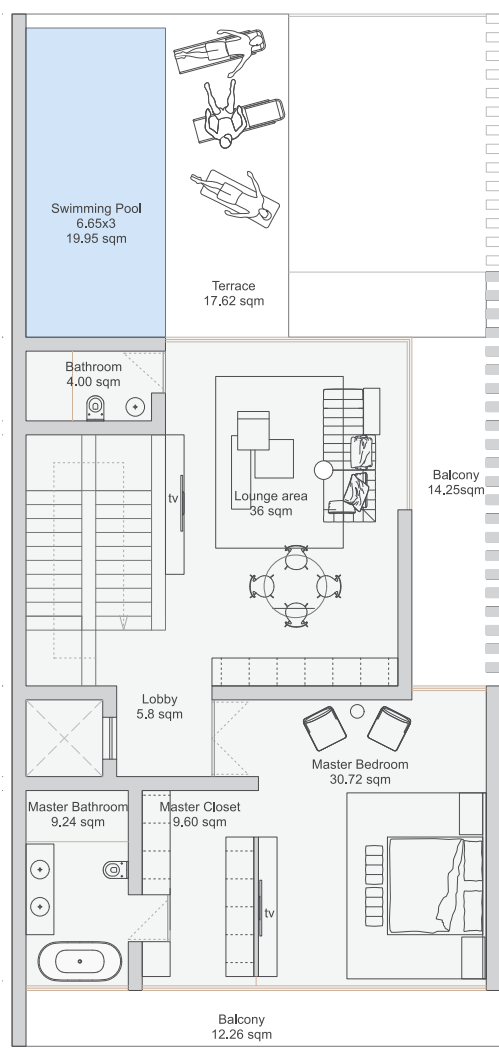
BALCONY
10.44 sqm

Area 381 sqm

3 Stories

SECOND FLOOR

95.4 sqm



LOUNGE AREA
36.00 sqm

LOBBY
5.80 sqm

BATHROOM
4.00 sqm

MASTER BEDROOM
30.72 sqm

MASTER BATHROOM
9.24 sqm

MASTER CLOSET
9.60 sqm

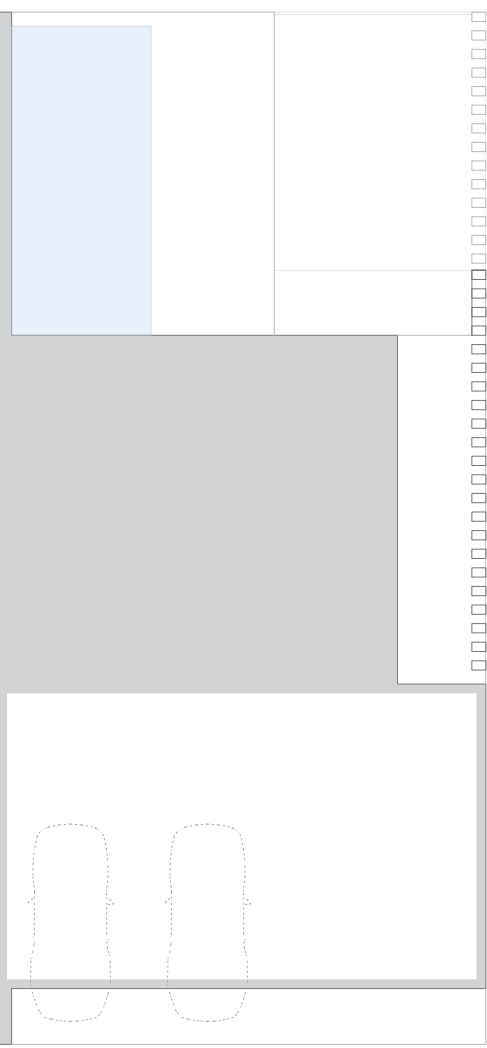
BALCONY 1
14.25 sqm

BALCONY 2
12.26 sqm

TERRACE
17.62 sqm

SWIMMING POOL
6.65 x 3 / 19.95 sqm

ROOF



B3

B3

Disclaimer 1.Drawings are not to scale. 2.The architectural details, dimensions and area in this plan are based on Schematic Design information only, and final As-Built conditions may vary. 3.All units are sold as unfurnished apartments, without furniture and furnishings, without white goods provisions, etc. 4.All images used are for illustrative purposes only and do not represent the actual size, features, specifications, fittings, and furnishings. 5.Marina Bay reserves the right to make revisions alterations, at its absolute discretion, and without liability.



SKY

VILLAS







SKY

VILLA

Disclaimer 1.Drawings are not to scale. 2.The architectural details, dimensions and area in this plan are based on Schematic Design information only, and final As Built conditions may vary. 3.All units are sold as unfurnished apartments, without furniture and furnishings, without white goods provisions, etc. 4.All images used are for illustrative purposes only and do not represent the actual size, features, specifications, fittings, and furnishings. 5.Marina Bay reserves the right to make revisions/alterations, at its absolute discretion, and without liability.





SKY

VILLA

Disclaimer 1.Drawings are not to scale. 2.The architectural details, dimensions and area in this plan are based on Schematic Design information only, and final As Built conditions may vary. 3.All units are sold as unfurnished apartments, without furniture and furnishings, without white goods provisions, etc. 4.All images used are for illustrative purposes only and do not represent the actual size, features, specifications, fittings, and furnishings. 5.Marina Bay reserves the right to make revisions/alterations, at its absolute discretion, and without liability.





marinabay.bh

VI
MARINA
BAY

REEF ISLAND